

Adams County 2017 WNV Positives

Legend

of positives at each site

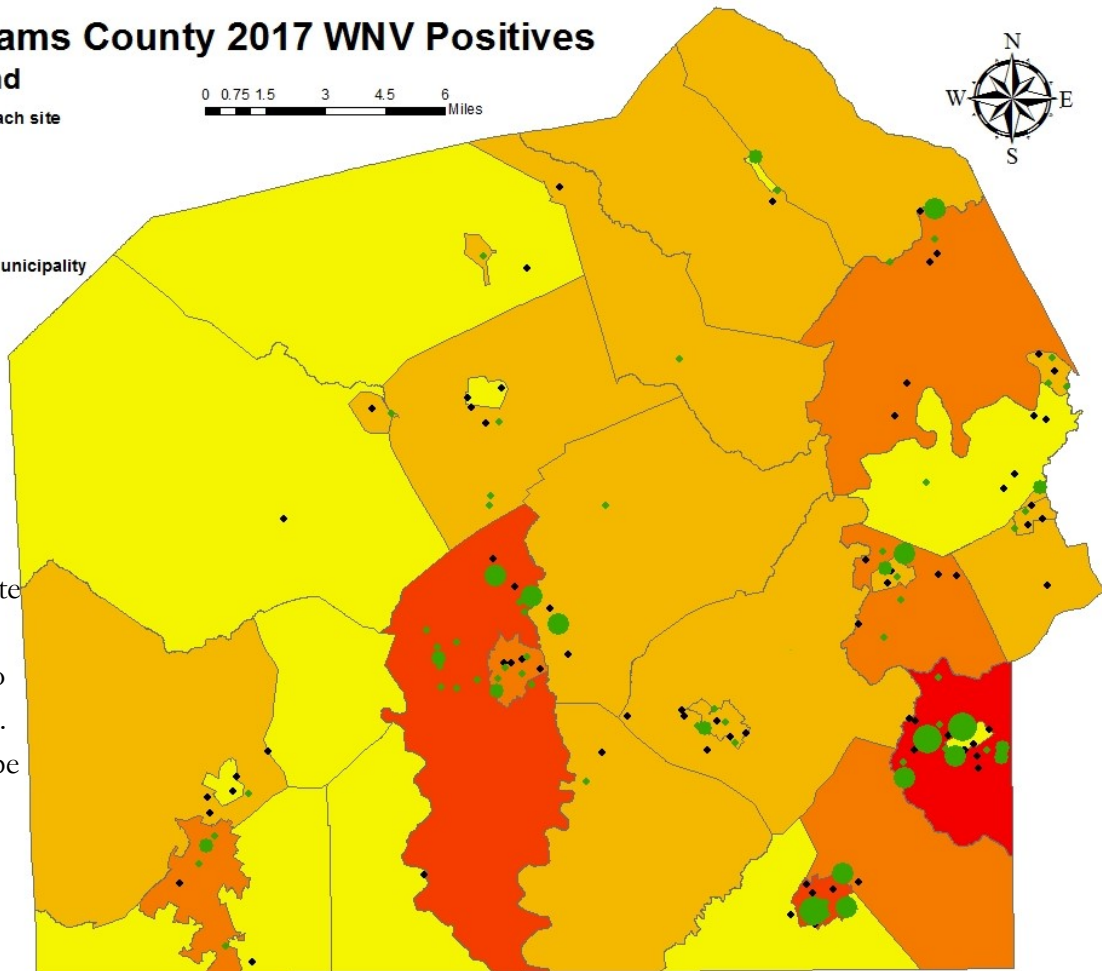
- 1 - 3
- 4 - 6
- 7 - 9
- 10 - 12

of positives in municipality

- 0
- 1 - 8
- 9 - 14
- 15 - 37
- 38 - 53

◆ Surveyed Sites

0 0.75 1.5 3 4.5 6 Miles



**Only 1 positive site in 2019 in Conewago Township. Map will be updated with 2020 data

Mosquito Surveillance

The two most commonly used traps for collecting mosquitoes are the gravid trap (right) and BG trap (left). When coupled with larval sampling and pesticide applications, sites indicated above are continually monitored for the West Nile virus.

Mosquitoes are collected from April to October. Once collected, the mosquitoes are sent to DEP for identification and virus testing.



For More Information

Mosquito-Borne Disease Control Coordinator

Adams County Conservation District
 670 Old Harrisburg Road Suite 201
 Gettysburg, PA 17325
 Phone: 717-334-0636 ext.3049
www.adamscounty.us



Department of Environmental Protection
<http://www.depgis.state.pa.us/WNV/index.html>



Pennsylvania Department of Health
 Adams County Office: 717-334-2112



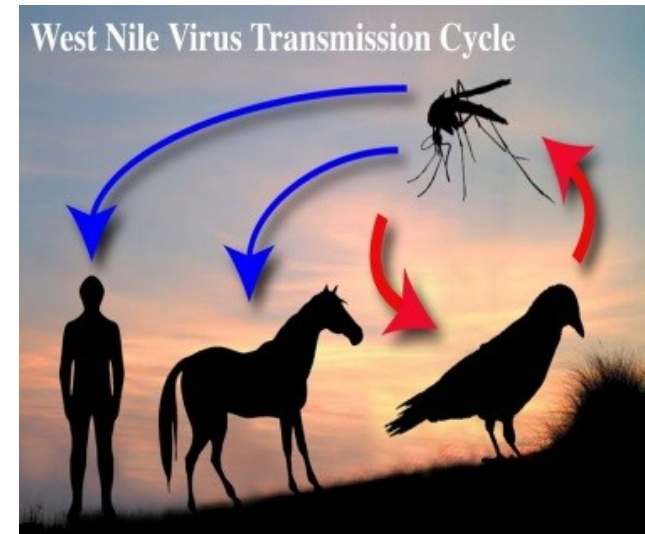
Center for Disease Control and Prevention
<http://www.cdc.gov/ncidod/dvbid/westnile/index.htm>

To Report Dead Birds

717-334-0636 ext. 3049
<http://www.depgis.state.pa.us/WNV/index.html>



Adams County Conservation District Mosquito-Borne Disease Control Program



West Nile Virus

West Nile Virus (WNV) is a mosquito-borne disease that can, in rare instances, cause encephalitis (swelling of the brain). Mosquitoes pick up the virus after they feed on infected birds and then spread it by biting people, other birds, and animals. The risk of being bitten by an infected mosquito is low, even if the WNV has been found in an area. Most people who get infected may experience no symptoms at all or develop mild, flu-like symptoms. Less than 1% of persons infected will develop serious illness.

Symptoms

When infection does cause illness, symptoms will usually appear within 3-14 days after being bitten. Mild, flu-like symptoms include fever, headache, body aches, skin rash, and swollen lymph nodes. Symptoms of severe infection include an acute headache, high fever, stiff neck, confusion, muscle weakness and reduced coordination, coma, tremors, convulsions, and paralysis. There is no specific treatment, but the more severe cases may require hospitalization.

Protecting Public Health

The goal of the WNV program is to reduce the risk of WNV exposure and transmission to humans through mosquito surveillance and control efforts. To accomplish this, the Department of Environmental Protection (DEP) has established a mosquito surveillance and control program for PA counties. In Adams County, the Adams County Conservation District administers the WNV program. During the mosquito-breeding season (April – October), sites are monitored throughout Adams County for both adult and immature mosquito stages.

Dead Bird Surveillance

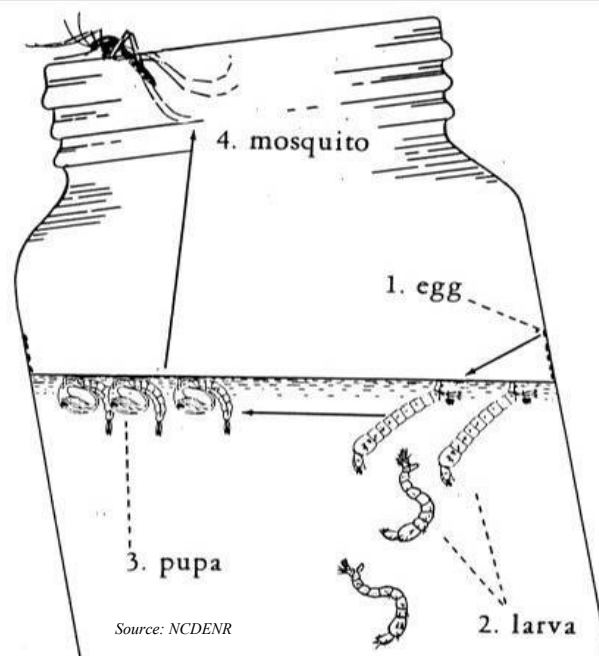
DEP is coordinating the collection of dead bird specimens for possible testing. Freshly dead birds with no obvious signs of trauma may be sent for WNV testing. Species being tested include: Crows, Raptors, Ravens, Magpies, and Blue Jays.

If you find a dead bird, please call the Adams County Conservation Office at: 717-334-0636.

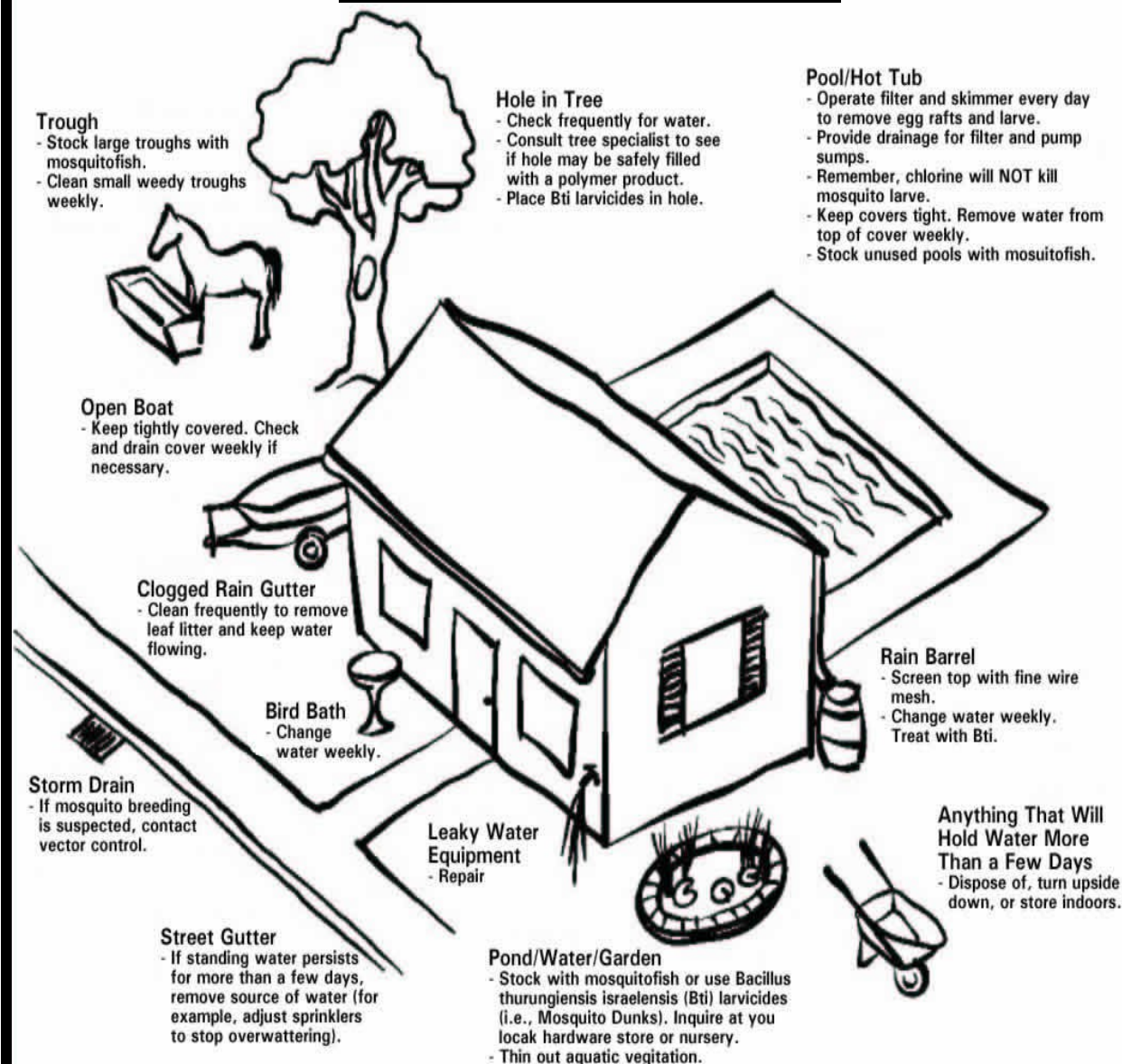
Mosquito Life Cycle

A mosquito goes through 4 stages during its life cycle; egg (1), larva (2), pupa (3), and adult (4). The eggs hatch and a larva emerges within a few days. The pupa develops and is the last stage before an adult mosquito emerges. Mosquitoes can complete their life cycle in less than a week.

Below, a mosquito flies away after hatching into an adult (4) and entering into the last stage of its life cycle. Now it will search out a blood meal before laying eggs on the surface of stagnant water.



Target the Source



Don't Give Mosquitoes A Chance

Mosquitoes need only a little water and as few as 5 days to breed and grow. So, almost anything that holds water for one week or more can produce these pests. Many places around your home may be causing mosquito problems. Destroy or empty these places and mosquitoes won't have a chance! Also, limit time spent outdoors when mosquitoes are most active (between dusk and dawn), wear long sleeves and pants, and use mosquito repellants containing DEET.