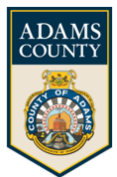


ACTPO

July 27, 2022



Office of
**PLANNING and
DEVELOPMENT**

Staff Updates

HOP/Traffic Study/Project Meetings

- SRTP/PA Commuter Services Board Meeting
- PennDOT – Bi-Monthly Planning Partners Call
- PennDOT – PennDOT Connects Outreach Planning Meeting
- LRTP Public Meetings

DRAFT 2022 LRTP –



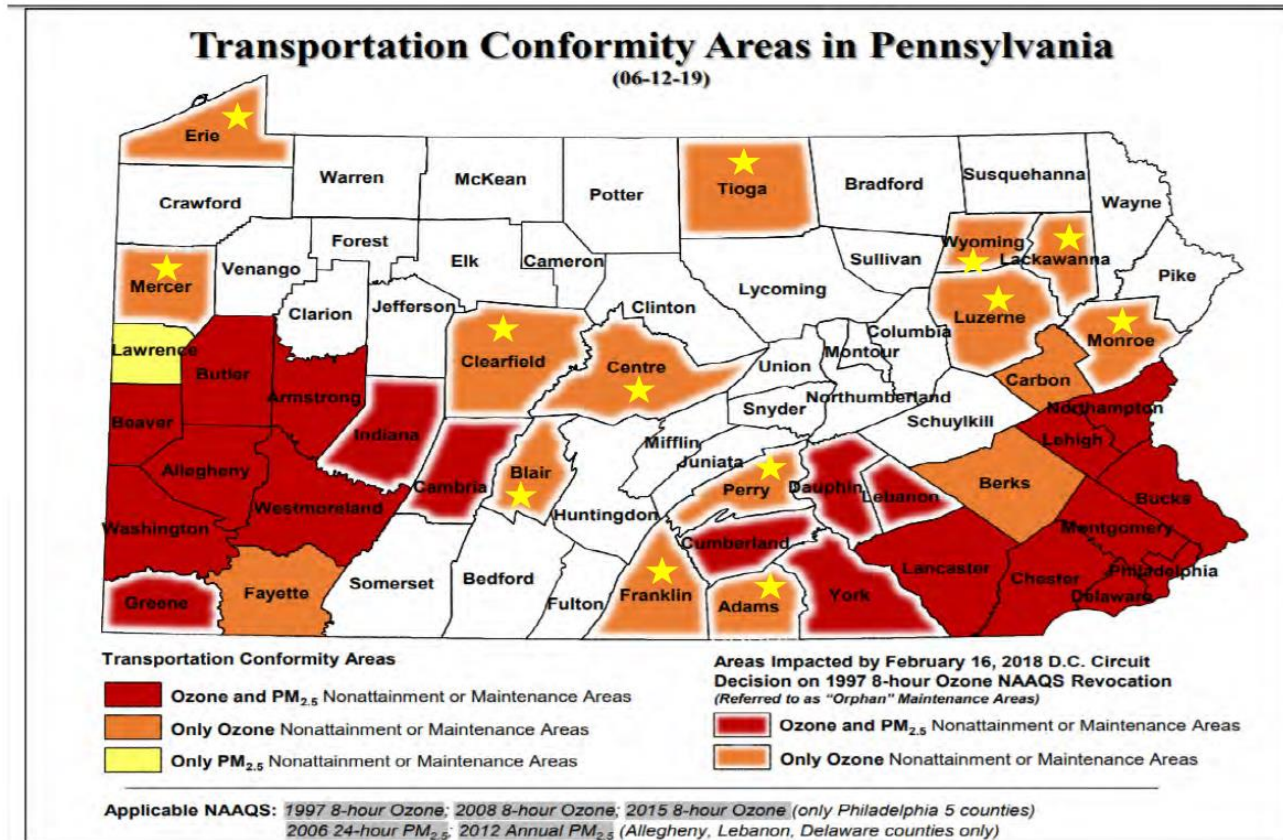
ONWARD2050
Adams County Long Range Transportation Plan

- Outline
 - 1) **INTRODUCTION:** General overview of ACTPO's responsibilities / the transportation planning process
 - 2) **PUBLIC ENGAGEMENT:** Public outreach process, strategies, and feedback
 - 3) **GOALS AND OBJECTIVES:** Federal Planning Factors / State LRTP G&Os / Local G&Os
 - 4) **LAND USE AND SOCIOECONOMIC TRENDS:** Profile of current and projected trends
 - 5) **THE TRANSPORTATION NETWORK:** Snapshot of the current transportation network
 - 6) **TRANSPORTATION PERFORMANCE MANAGEMENT:** Required performance report
 - 7) **FUTURE STRATEGIES:** Future policy, planning, and action items
 - 8) **FINANCIAL GUIDANCE:** Future funding projections for a fiscally constrained improvements plan
 - 9) **PROJECT PRIORITIZATION:** Framework for prioritizing and ranking projects
 - 10) **ENVIRONMENTAL AND CULTURAL ANALYSIS:** Environmental and cultural considerations
 - 11) **ENVIRONMENTAL JUSTICE:** EJ Analysis
 - 12) **AIR QUALITY:** Air Quality Conformity Report and Analysis

APPENDIX

Air Quality Conformity

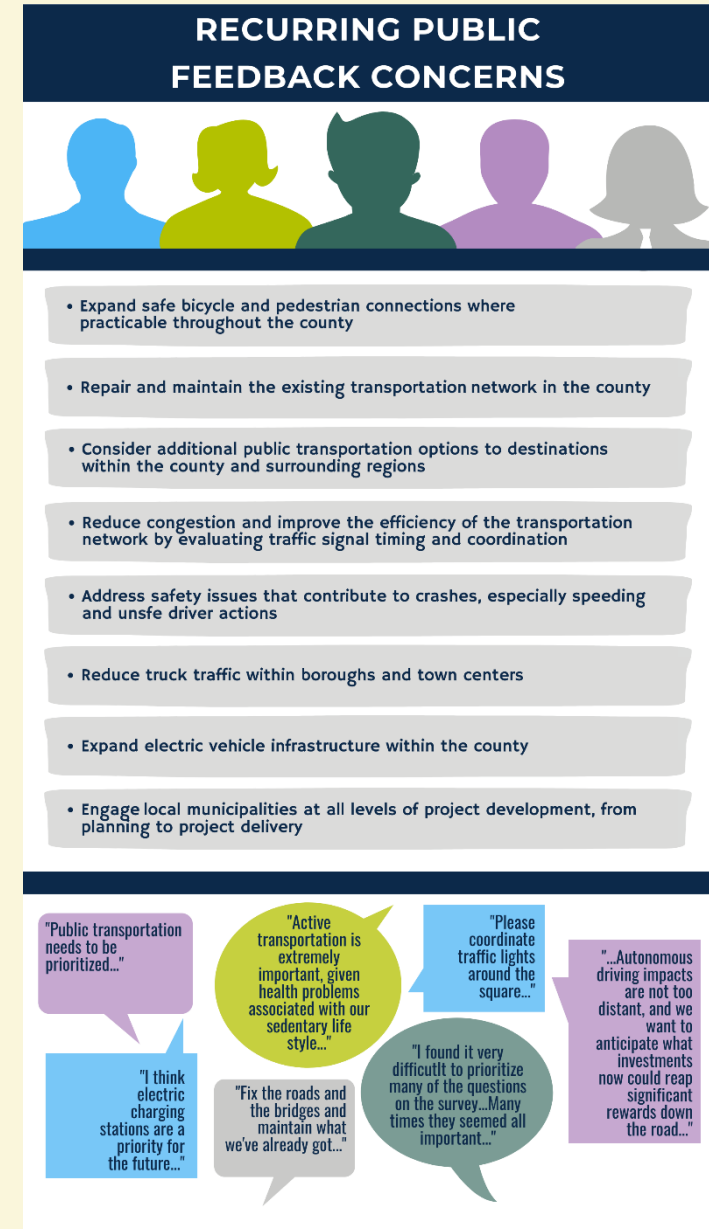
Counties Where Transportation Conformity Applies



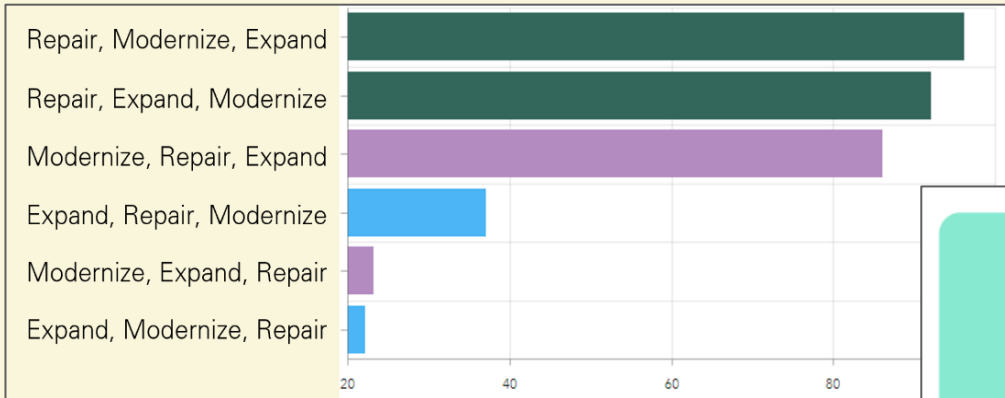
★ No Emissions Analysis Required

Public Engagement

- Established the foundation for developing ONWARD2050
 - Public Survey
 - Public Comment Map
 - Municipal Outreach
 - Subcommittee – THANK YOU!!



Scenario Ranking



- 356 Public Surveys Submitted
- Survey Respondents ranked scenarios
 - Graph depicts ranking order

REPAIR



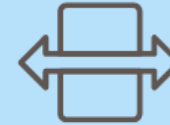
Repair Existing System

Funding allocated for the transportation system is used to repair the existing transportation infrastructure in the county.

Priorities include:

Pavement, Bridges, Safety [Repair existing measures], Signals, Signs

EXPAND



Expand Transportation System

Funding allocated for transportation is used to add additional services, facilities, and infrastructure to the transportation system.

Priorities include:

Connectivity, Bicycle and Pedestrian Facilities, Safety, Transit Service

MODERNIZE



Modernize Transportation Network


Funding allocated for the transportation system is used to implement new technology for adapting to emerging trends and future needs.

Priorities include:

Safety, Alt. Fuels Infrastructure, Intelligent Transportation Systems (ITS), Connected and Autonomous Vehicles, Ride-hailing

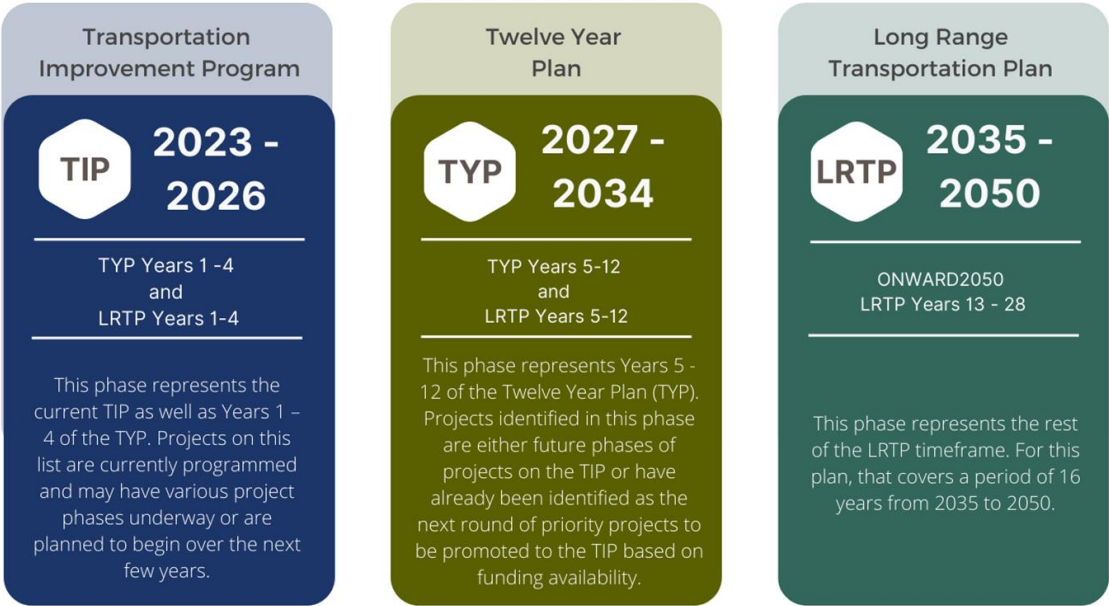
Future Strategies

- ASSET MANAGEMENT
- MOBILITY, ACCESS, AND RELIABILITY
- MODERNIZATION AND OPERATION
- SAFETY and EQUITY

 Modernization and Operation				
Transportation Systems Management and Operation (TSMO)				
ACTION ITEM	TYPE	LEAD	SUPPOT	PRIORITY
Incorporate TSMO strategies in all future projects.				
	Policy/ Project	ACTPO	PennDOT	Ongoing
Identify areas where new or upgraded communications networks are needed along key corridors to support TSMO strategies as well as other data service needs.				
	Planning/ Analysis	PennDOT	ACTPO, Municipalities, Community Partners	High
Explore cooperative and coordinated management of traffic signals through upgraded signal technology such as adaptive or coordinated signal networks to reduce travel time and delay.				
	Policy/ Project	ACTPO	PennDOT, Municipalities	Medium
Pursue the formation of Traffic Incident Management (TIM) teams for major corridors in Adams County.				
TIM teams work to reduce the time it takes to detect, respond to, and clear incidents as well as manage the flow of traffic around an incident until it is cleared.				
	Project, Public Engagement	Municipalities, Emergency Responders	ACDES, ACTPO, PennDOT	Medium
Implement new, and upgrade existing, Intelligent Transportation System (ITS) infrastructure as needs and new technology warrant.				
	Strategy	PennDOT	ACTPO, Municipalities, Community Partners	Low

Financial Projections

Funding Phases



2023-2026 Transportation Improvement Program (TIP) - 4 years

Fiscally Constrained: \$56,495

2023-2034 Twelve Year Plan (TYP) - 12 years

Fiscally Constrained: \$78,049

LRTP Funding Scenario - 2035 through 2050 (16 years)

Source: 1999 - 2021 (ACTPO's existence)		
	Actual	Target
Total LRTP Years	16	16
Average Funds per Year	\$12,178	\$13,577
2050 Funding Allocation	\$194,844	\$217,229

Projected Funding over 28 years (TIP + TYP + Projected LRTP Allocation)
\$351,773

REPAIR		
Element	Target %	LRTP Allocation
Pavement	39.89%	\$45,758
Bridges	37.92%	\$43,502
Safety	16.01%	\$18,368
Signals	4.49%	\$5,156
Signs	1.69%	\$1,933
Total	100%	\$114,717

EXPAND		
Element	Target %	LRTP Allocation
Connectivity	35.39%	\$12,742
Bike/Ped	29.78%	\$10,720
Safety	19.38%	\$6,978
Transit	15.45%	\$5,562
Total	100%	\$36,001

MODERNIZE		
Element	Target %	LRTP Allocation
Safety	44.94%	\$29,893
Alt. Fuels	22.19%	\$14,760
ITS	12.92%	\$8,594
Freight	10.39%	\$6,913
A/V	5.34%	\$3,550
Ride Hailing	4.21%	\$2,802
Total	100%	\$66,511

LRTP Allocation Grand Total	\$217,229
-----------------------------	-----------

Filtered

ASSET MANAGEMENT ALLOCATION BREAKDOWN		
CATEGORIES	% Allocation	Total LRTP Allocation
Pavement	50%	\$45,758
Bridges	48%	\$43,502
Signs	2%	\$1,933
Total	100%	\$91,193

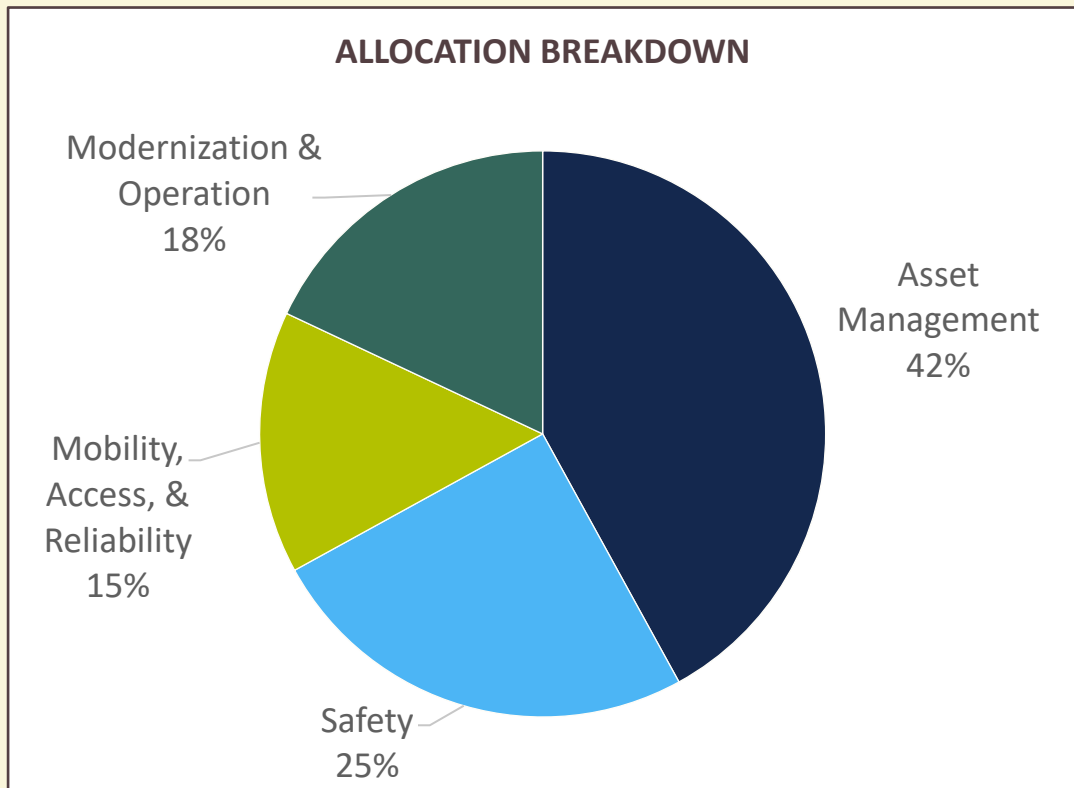
SAFETY ALLOCATION BREAKDOWN		
CATEGORY	% Allocation	Total LRTP Allocation
Safety	100%	\$55,238
Total	100%	\$55,238

MOBILITY, ACCESS, & RELIABILITY ALLOCATION BREAKDOWN		
CATEGORIES	% Allocation	Total LRTP Allocation
Connectivity	40%	\$12,742
Active Transportation	34%	\$10,720
Transit	26%	\$8,364
Total	100%	\$31,826

MODERNIZATION & OPERATION ALLOCATION BREAKDOWN		
CATEGORIES	% Allocation	Total LRTP Allocation
Alternative Fuels	38%	\$14,760
ITS	22%	\$8,594
Freight/Rail	18%	\$6,913
Signals	13%	\$5,156
Connected/Autonomous Vehicles	9%	\$3,550
Total	100%	\$38,972

LRTP Allocation Grand Total	\$217,229
-----------------------------	-----------

Project Categories and Funding Allocation

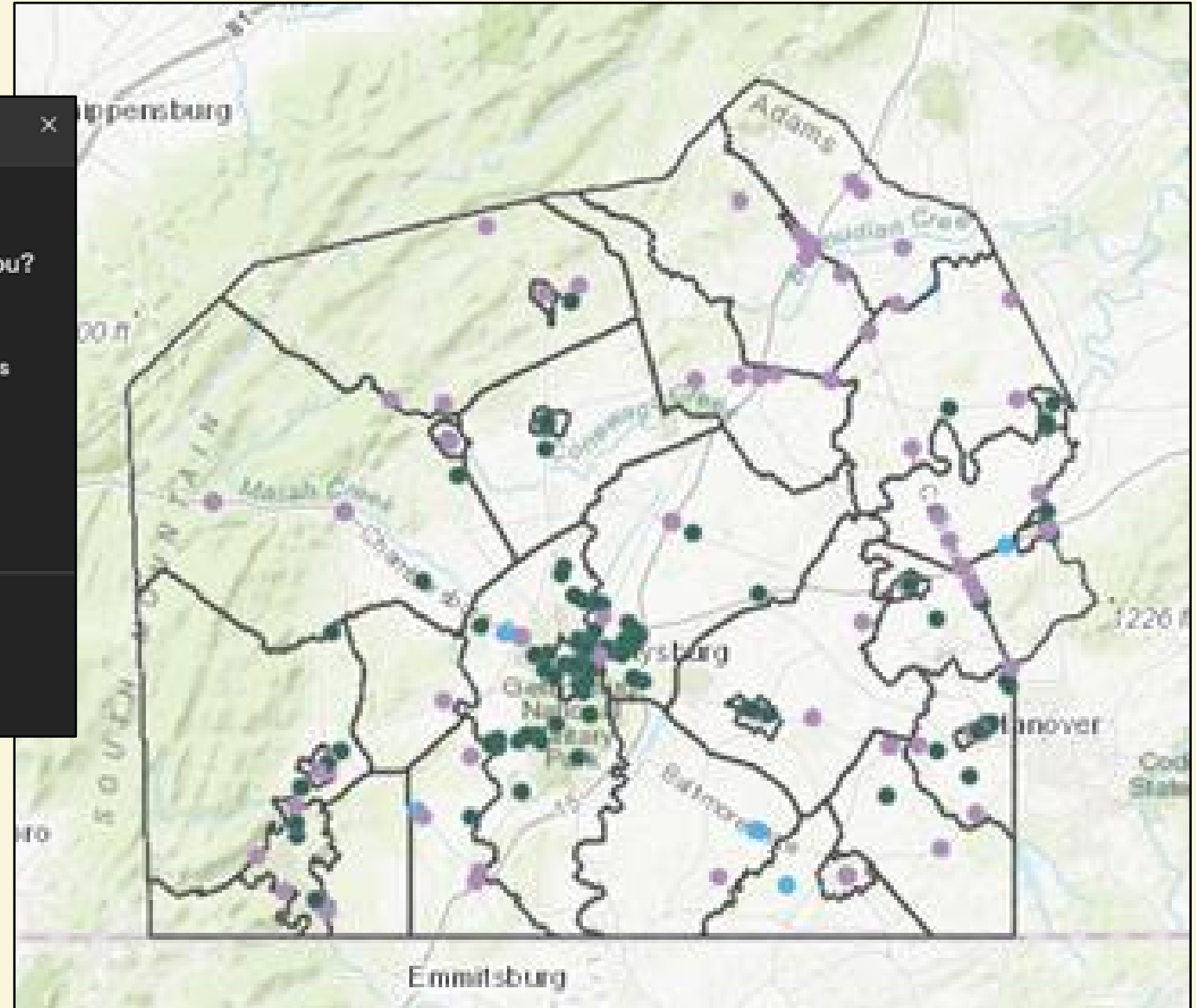
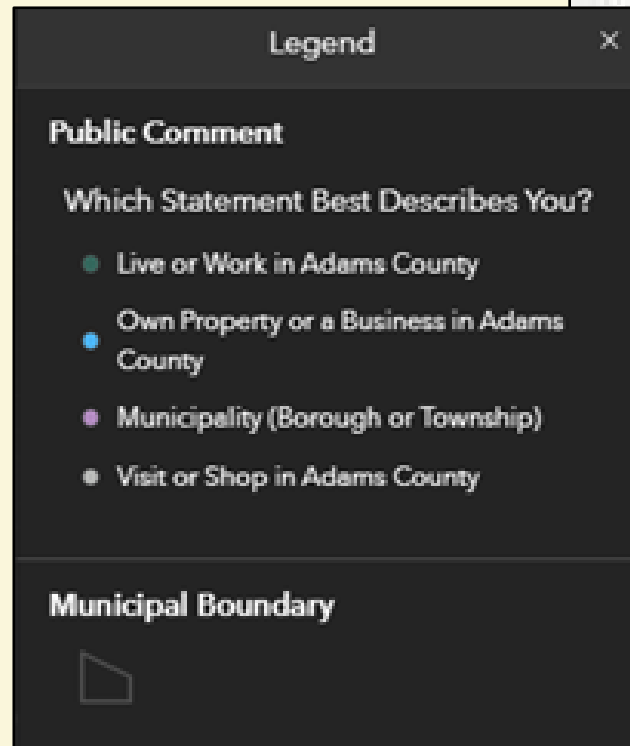


FUNDING CLASSES		
Categories		% Overall Allocation
Safety		25%
Pavement		21%
Bridges		20%
Alternative Fuels		7%
Connectivity		6%
Active Transportation (Bicycle/Pedestrian)		5%
ITS		4%
Transit		4%
Freight/Rail		3%
Connected/ Autonomous Vehicles		2%
Signals		2%
Signs		1%

222 Identified Locations

Identified through:

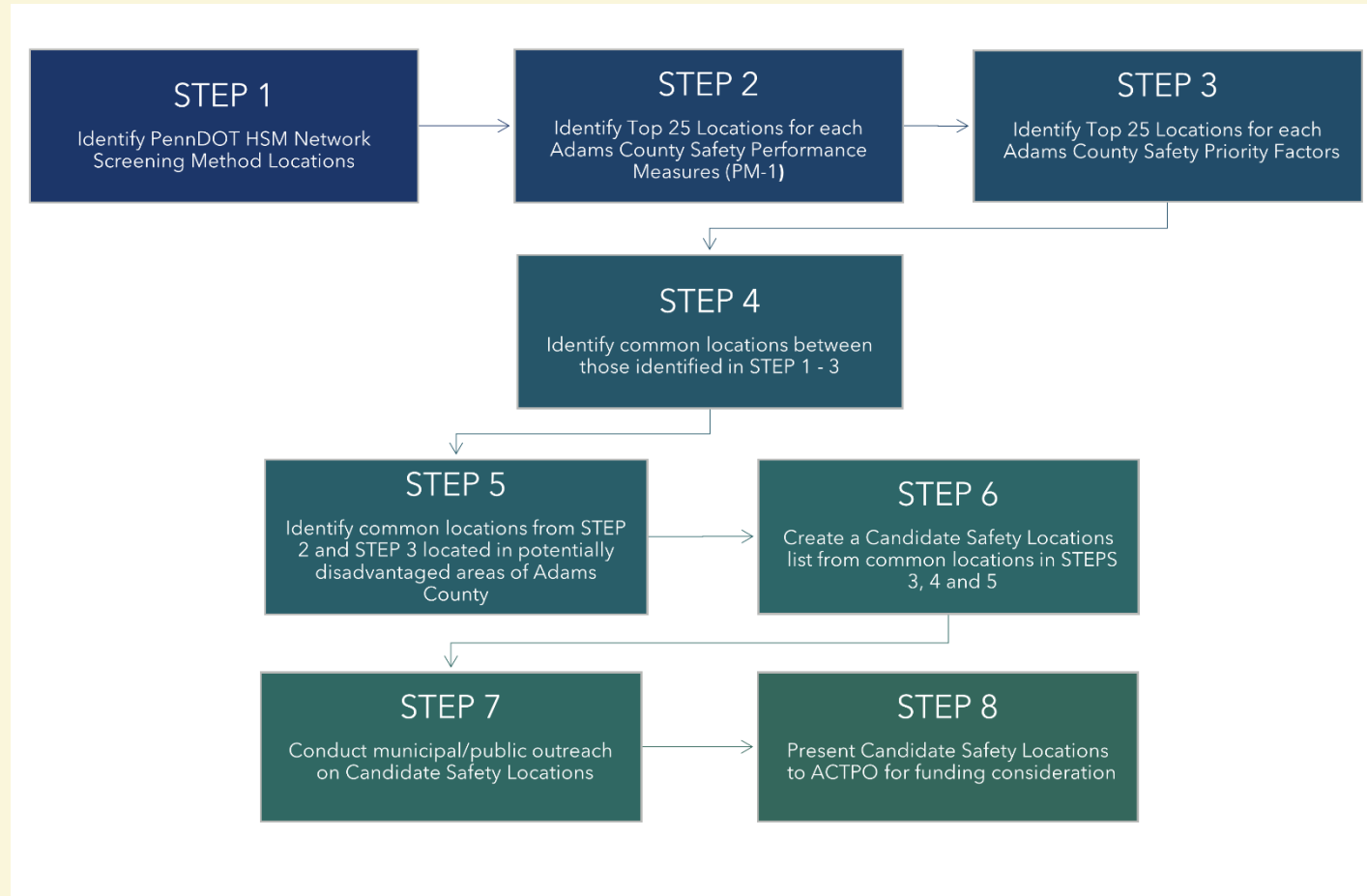
- Public Comment Map
- Municipal Meetings
- Open-ended Survey Responses



Project Prioritization

- Ranking criteria established for project categories based on public feedback
 - Asset Management
 - Pavement
 - Bridge
 - Safety
 - Mobility, Access, and Reliability
 - Connectivity
 - Transit
 - Active Transportation
 - Modernization and Operation

Ex. Safety Ranking Criteria



Other Required Elements of the Plan

- Transportation Performance Management Report
 - Performance Measures and Target Discussion
- Current Transportation Network, Land Use and Socioeconomic Trends
- Environmental Analysis
 - Environmental and cultural considerations
- Environmental Justice
 - EJ Analysis (same as TIP)
 - Plan to expand to a comprehensive equity analysis
- Air Quality Conformity (same as TIP)

Appendix

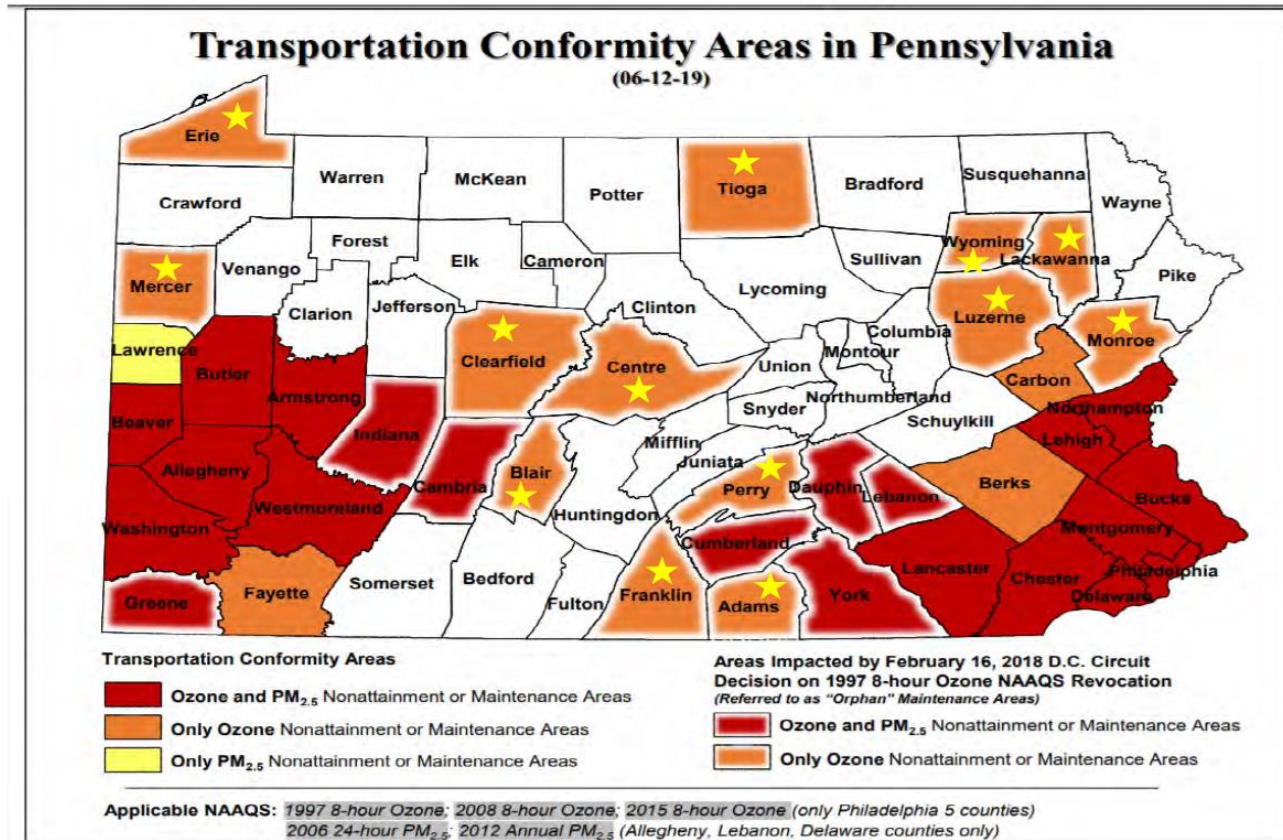
- A. LRTP Development Timeline
- B. Virtual Public Involvement Policy
- C. Public Engagement Documentation
 - C-1. Survey Results
 - C-2. Open-Ended Comments
 - C-3. Identified Project Locations / Future Needs
- D. Population Projections by Municipality
- E. Transportation Performance Management
- F. On-Road Active Transportation and Safety Analysis
- G. YAMPO MTP Capital Improvements Plan
- H. Adams County 2023-2026 TIP/TYP
- I. Financial Guidance Charts
 - I-1. Actual and Target Expenditures Tables and Chart
 - I-2. ACTPO Funding Scenario Tables
 - I-3. LRTP Allocations by Category
- J. Ranking System Framework
- K. Listed and Eligible Historic Resources
- L. Statewide EJ Analysis Methodology
- M. Public Comment Period Documentation

ONWARD2050 – Public Comment Period Summary

- Started – June 24, 2022 Ended – July 25, 2022
 - Gettysburg Times, York Daily Record, Merchandiser
 - e-MERGEing News, Gettysburg Connection, Project Website, County Website
- Two public hybrid meetings held on July 13, 2022
 - No Public Participation
- Tribal Coordination
- Comment Received
 - Agency Coordination Meeting (ACM)
 - Active Transportation
 - Country Club Road Bridge
 - Intersection Concern
 - Agency Comments (rabbittransit / FHWA / FTA / PennDOT)

Air Quality Conformity

Counties Where Transportation Conformity Applies



★ No Emissions Analysis Required

Next ACTPO Meeting

October 26, 2022

1:00 p.m.