



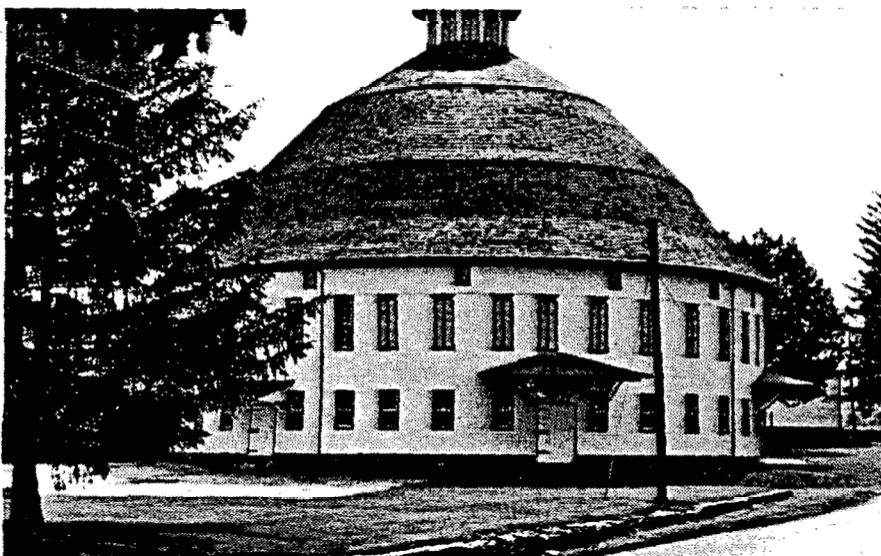
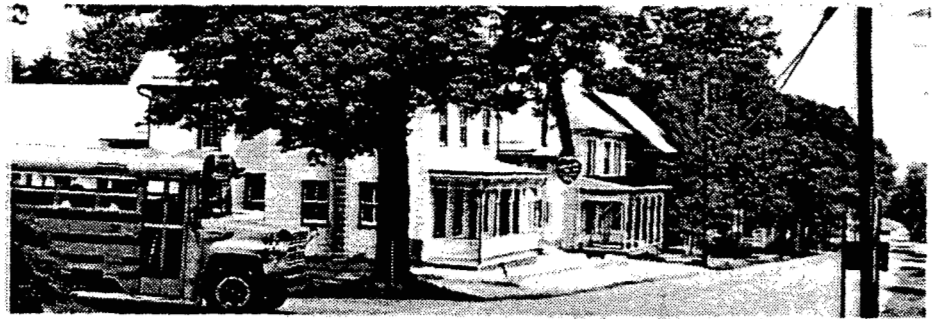
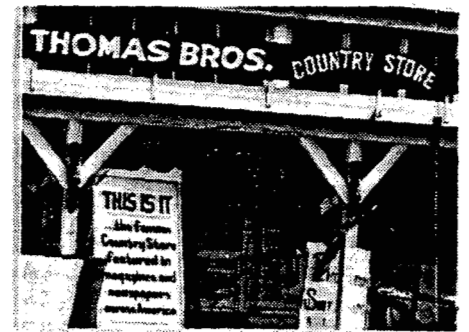
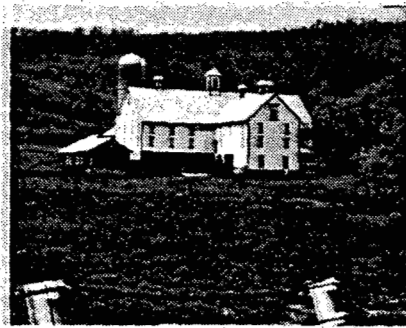
Norman Day Associates

COMPREHENSIVE PLAN

in association with:

Orth-Rodgers & Assoc.
Coughlin, Keene & Assoc.
John Milner Associates
R.E. Wright Associates

Adams County, Pennsylvania



ACKNOWLEDGEMENTS

The development of a new comprehensive plan for Adams County began in January 1990. During these early months, many citizens participated in the seven regional meetings held at county high schools, while hundreds more residents responded to questionnaires published in local newspapers. The issues, opportunities, and problems identified by these early participants were enormously helpful in defining the scope and emphasis of the countywide planning process.

Later, on two separate occasions, community leaders participated in Focal Group meetings - scores of people representing local governments, utilities, social service agencies, historical interests, and the agricultural and business communities helped to further clarify planning, development, and preservation issues facing Adams County. While it is not possible to identify each person who participated in a Town or Focal Group meeting, or individuals who returned a questionnaire, Adams County is indebted to many people for their time and efforts.

Other individuals participated in the planning process on a regular, structured basis. These people, associated with five groups, are hereby recognized for their contributions:

ADAMS COUNTY PLANNING COMMISSION (ACPC)

John R. Lerew, Chairman

Kathryn Boyer
Mary Furlong
Ernest R. Shriver
Grady Edwards

J. Van Cleve Lott
Victor Frank III
Alan Stock
James Behm

Cheryl Shew and Catherine Gault served on the Commission during the early stages of the Plan development.

ADAMS COUNTY OFFICE OF PLANNING AND DEVELOPMENT

Richard H. Schmoyer, AICP, Director of Development, served as
Project Manager for Adams County
John I. Callenbach, Director of Planning
Paul Farkas, Assistant Planner
Anne Thomas, Administrator
Becky Sponseller, Clerk-Typist

CONSULTANT TEAM

Norman Day Associates, Philadelphia, PA, served as the prime consultant for the Adams County Comprehensive Plan. Norman D. Day, AICP, provided overall direction during the Plan development. Joseph A. Bucovetsky, AICP, served as the project manager for the consultant team. Supporting firms, and their respective persons-in-charge are as follows:

John Milner Associates - Historic Resources	Peter Benton, R.A.
Orth-Rodgers and Assoc. - Transportation	Jeffrey L. Greene, P.E.
R.E. Wright Associates - Infrastructure	Dr. Richard S. Greeley
Coughlin, Keene and Associates - Agriculture Policies	Dr. Robert E. Coughlin

CITIZENS ADVISORY COMMITTEE (CITAC)

Jay Mackie	Kathy Thomassy	James Behm
Steven Wennberg	Sue Tanner	Margaret Elliott
Steven Maitland	George Riser	MacDonald Heebner
Evelyn Martin	Robert McConkey	Dr. Charles H. Glatfelter
Harry Stokes	Robert Eicholtz	Robert Wagaman
Cyrus Karper	Mary Lower	Thomas J. Weaver
Dennis Wallick	Ellie Bennett	Raymond C. Fitz, Jr.
David Krebs	Roger Steele	Joanne Eisenhart
Albert Barnes	Myles Starner	Marsha Lucidi
John Kulp	Gene Motter	John Hess
Tim Ruth	Nancy Taylor	John Lerew
William Lance Landauer	Susan Kiehl	

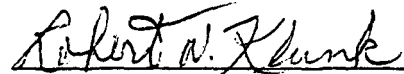
TRANSPORTATION ADVISORY COMMITTEE (TRAC)

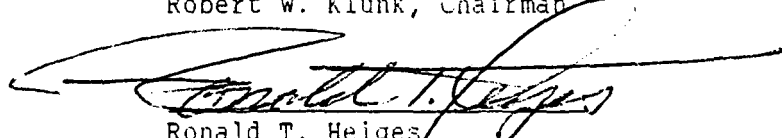
Jean Simpson	Dan Hobbs	Frank Cudworth
Richard Selby	Steve Wells	Jeffrey Weaver
Janet McNally	Edwin Calvert	Robert Davidson
John Straka	William Smith, Jr.	Tedd Rhodes
Jacque Hoffman		


In addition to these individuals, recognition is also given to John J. Corris, Administrator, County Agricultural Preservation Board; Thomas R. Piper, County Agricultural Extension Agent; Mercedes Seman, Soil Conservation Service; Kent Schwartzkopf, National Park Service; and Dr. Robert Bloom, local historian, for their special efforts. Numerous citizen

volunteers from Gettysburg Borough and the Gettysburg-Adams County Chamber of Commerce who conducted a survey of truck traffic through Gettysburg also deserve recognition. In addition, former Adams County Commissioners Thomas L. Collins and Catherine W. Cowan provided project leadership during their respective tenures in office.

Finally, Adams County also recognizes that without the financial assistance provided by the Commonwealth of Pennsylvania, the development of a new County Plan would have been difficult. Specifically, the County recognizes the Community Development Block Grant (CDBG) and State Planning Assistance Grant (SPAG) funds obtained through the Department of Community Affairs (PennDCA) and the Federal Transportation Planning Grant, obtained through the Department of Transportation (PennDOT). Ted Robinson of PennDCA and Jeffrey Weaver of PennDOT are recognized for the direct support and assistance that they provided.


Robert W. Klunk, Chairman


Ronald T. Heiges


Harry Stokes

Adams County Commissioners

TABLE OF CONTENTS

Adams County Comprehensive Plan

List of Tables

List of Illustrations

	<u>Page</u>
Chapter One: Background/Planning Process	1-1
Chapter Two: Existing Conditions	
Section 1: Introduction	2-1-1
Section 2: Existing Land Use	2-2-1
Section 3: Pattern of Change	2-3-1
Section 4: Natural Resources	2-4-1
Section 5: Historic & Landscape Resources	2-5-1
Section 6: Agricultural Resources	2-6-1
Section 7: Population, Housing and Employment	2-7-1
Section 8: Circulation	2-8-1
Section 9: Community Facilities	2-9-1
Section 10: Infrastructure and Environmental Systems	2-10-1
Chapter Three: Growth Management Plan	
Section 1: General Introduction	3-1-1
Section 2: Goals and Objectives	3-2-1
Section 3: Land Use Plan	3-3-1
Section 4: Circulation Plan	3-4-1
Section 5: Housing Plan	3-5-1
Section 6: Community Facilities Plan	3-6-1
Section 7: Historic & Landscape Resources Conservation Plan	3-7-1
Section 8: Agricultural Resources Conservation Plan	3-8-1
Section 9: Utilities Plan	3-9-1
Section 10: Environmental Protection Plan	3-10-1
Chapter Four: Implementation Strategy	4-1
Appendix 1: Peak-Hour Turning Movements - Selected Adams County Road Corridors	

LIST OF TABLES

Adams County Comprehensive Plan

<u>Table #</u>	<u>Title</u>	<u>Page</u>
2.3.1	Units and Lots in Recorded Subdivision Plans of 5-or-more Lots, by Municipality, 1980-1990	2-3-4
2.3.2	Housing Inventory and Building Permits Issued by Structural Type, 1970-1990	2-3-5
2.3.3	Housing Totals and Percent Change in Adams County Municipalities, 1970-1990	2-3-6
2.3.4	Adams County Pending and Proposed Development by Municipality, January 1991	2-3-7
2.6.1	Land in Farms in Adams and Nearby Counties, 1982 and 1987	2-6-10
2.6.2	Area in Farms and in Cropland: Pennsylvania and Adams County, 1954-1987	2-6-11
2.6.3	Land Use, Land in Farms, Adams County, 1974-1987	2-6-12
2.6.4	Open Land by Agricultural Capability Classification	2-6-13
2.6.5	Size Distribution of Parcels over 10 Acres with 10% or More Open Land	2-6-15
2.6.6	Size Distribution of Farms, Adams County, 1982 & 1987	2-6-18
2.6.7	Types of Farms, Adams County, 1982 & 1987	2-6-19
2.6.8	Characteristics of Farm Operators, Farms with Sales of \$10,000 or More: Adams County, 1974-1987	2-6-20
2.6.9	Characteristics of Farm Operators in Adams County and Nearby Counties: Farms with Sales of \$10,000 and Over, 1987	2-6-21
2.6.10	Type of Farm Organization, Adams County, 1978-1987	2-6-22
2.6.11	Economic Measures of the Agricultural Sector, Adams County, 1974-1987	2-6-23

<u>Table #</u>	<u>Title</u>	<u>Page</u>
2.6.12	Comparison of All Farms with Farms Reporting Sales of \$10,000 or Over	2-6-24
2.6.13	Agricultural Infrastructure (Numbers of Establishments)	2-6-25
2.6.14	Agricultural Security Areas as Compared with Area in Prime Soils, By Municipality	2-6-26
2.7.1	Population Totals in Adams County Municipalities and Selected Jurisdictions, 1950-1990	2-7-11
2.7.2	Percentage Change in Population in Adams County Municipalities & Selected Jurisdictions, 1950-1990	2-7-12
2.7.3	Population Density in Adams County and Selected Jurisdictions, 1950-1990	2-7-17
2.7.4	Population Density, Adams County Municipalities, 1980 and 1990	2-7-18
2.7.5	Population by Five-Year Age Groups in Adams County, 1950-1980	2-7-19
2.7.6	Percent Distribution of Population by Selected Age Groups in Adams County & Selected Jurisdictions, 1970-2010	2-7-20
2.7.7	Assisted Housing in Adams County	2-7-21
2.7.8	Alternative Population Projections for Adams County, 1990-2010	2-7-22
2.7.9	Housing Units to be Constructed in Adams County, 1990-2010	2-7-24
2.7.10	Housing Units to be Constructed by Structural Type, Adams County, 1990-2010	2-7-24
2.7.11	Employment by Major Industry in Adams County, 1970-1988	2-7-25
2.7.12	Percent Distribution of Employment by Major Industry in Adams County & Selected Jurisdictions, 1988	2-7-26