

ACTPO

October 26, 2022



Staff Updates

HOP/Traffic Study/Project Meetings

- SRTP/PA Commuter Services
 - September Board Meeting
 - Long-range Strategic Planning Meeting
- PennDOT – Fall Planning Partners Meeting
- 2023-2026 TIP PennDOT Connects Project Meetings – 10 total
- Developments of Significance – New agenda item coming soon.

Staff Updates

DEVELOPMENT OF REGIONAL SIGNIFICANCE					
Development Name	Municipality	Projected to generate more than 1,000 vehicle trips/day or more than 100 truck trips/day	Residential development with 50 or more lots or units	300 or more parking spaces	Industrial development with greater than 100,000 square feet of building floor area
Mount Zion Commons	Springettsbury Township	8,263	150		
Dillsburg Warehouse	Carroll and Franklin Townships	4,772			1,978,400 sq. ft.
19 Reynolds Mill Road	York Township	1,180			
Carroll Residential Development	Carroll Township	2,641	290		

Staff Updates

Local Bridge Update

Daniel T. Worley,
Chairman
Woody Myers,
Vice-Chairman
Steve Gotwols,
Supervisor

LATIMORE TOWNSHIP
Board of Supervisors
559 Old US Route 15
York Springs, PA 17372
717-528-4614; FAX 717-528-8281

OFFICE HOURS:
Monday: 11-4
Tuesday: Closed
Wednesday: 11-4
Thursday: 11-4
Friday: Closed

Mr. Robert L. Gordon, ACTPO Chair
Adams County Transportation Planning Organization
670 Old Harrisburg Road
Suite 100
Gettysburg, PA 17325

Re: Latimore Township Bridge No. LAT-2
T-635 (Ridge Road) over Latimore Creek
Bridge Replacement
Transportation Improvement Program

Dear Mr. Gordon:

The Latimore Township Supervisors respectfully request that ACTPO add the project for the replacement of Latimore Township Bridge No. LAT-2, T-635 (Ridge Road) over Latimore Creek to the Transportation Improvement Program (TIP) for federal and state funding. We will apply Latimore Township funds for the local 5% share, if required.

Latimore Township Bridge No. LAT-2 is in serious condition due to corrosion of the steel I-beam superstructure. The single span bridge is posted for a weight limit of 5 Tons and has a one lane width.

The following is the preliminary estimate of the project costs for the replacement of Bridge No. LAT-2.

Preliminary Engineering	\$ 275,000
Final Design	\$ 225,000
Right of Way	\$ 75,000
Utilities	\$ 25,000
Construction	<u>\$1,000,000</u>
Total	\$1,600,000

Thank you for considering our request. Please contact us if you need additional information.

Sincerely,

LATIMORE TOWNSHIP SUPERVISORS

Cc: Andrew D. Merkel, AICP, Adams County Office of Planning and Development
William D. Cameron, PE, Adams County Bridge Engineer, Pennoni Associates Inc.

Public Participation Plan (PPP) Update

2023-2026 TIP Results

- Gettysburg Times, Hanover Evening Sun, *e-MERGEing News* and various websites
- 20 total comments received
 - 11 can be traced to the *e-MERGEing News* distribution list or websites
 - 9 from other sources
- Two Public Meetings resulted in 2 attendees total (both in person)

ONWARD 2050 Results

- Gettysburg Times, York Daily Record, Merchandiser (all 3 Adams County Editions), *e-MERGEing News* and various websites
- 8 total comments received
 - 7 can be traced to the *e-MERGEing News* distribution list or websites
 - 1 from the print sources
- Two Public Meetings resulted in 0 attendees

2023-2026 PA STIP – Federal Planning Findings

Commendations

1. Transportation Funding Analysis
2. STIP Public Involvement Strategy
3. State Freight Work Group
4. Pennsylvania Efforts on the National Electric Vehicle Infrastructure Program
5. Transit Asset Management (TAM) Outreach and Performance Targets

Recommendations

1. Safety Planning, Programming and Project Delivery
2. Integration of Transportation Performance Management (TPM)
3. MPO/RPO LRTP Development Process
4. MPO/RPO Compliance with FTA Title VI Requirements
5. Annual Listing of Obligated Projects for Transit

Staff Updates

PennDOT Multimodal Transportation Fund (MTF)

- Application round is open through November 14, 2022.
- Eligible applicants include municipalities, business/non-profits organizations, public transportation agencies, public airports, airport authorities and ports and rail entities
- Projects that will be considered include improved streetscape, lighting, sidewalk facilities, and pedestrian safety; improved connectivity or utilization of existing transportation assets; or advancing transit-oriented-development.
- If successful, funding becomes available in July 2023

PENNDOT NEVI STATE PLAN



PENNSYLVANIA STATE PLAN FOR ELECTRIC VEHICLE INFRASTRUCTURE DEPLOYMENT

National Electric Vehicle Infrastructure (NEVI)
Formula Program

VERSION FOR FFY 2022-2023

Approved by USDOT / On PennDOT's Website
Search for "*PennDOT NEVI State Plan*"

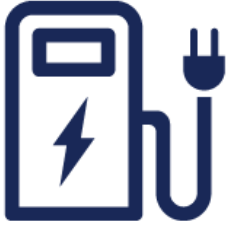
What's in the Plan?

- Vision and goals for the NEVI program
- Focus areas for NEVI program spending
- Needs, gaps and opportunities
- Key challenges and risks
- Contracting framework (more to come)
- Labor and workforce needs and actions
- Engagement and equity priorities

CHARGING BASICS

EV CHARGING

How to Charge Your EV



Charge Time



Charging Locations



EV Plug Type



Power Source

Level 1

3.5 - 6.5 miles
Per Hour

Residential,
Workplace



J1772



Tesla



Standard
Wall Outlet

Level 2

14 - 35 Miles
Per Hour

Residential,
Workplace,
Destinations



J1772



Tesla



Heavy Duty Outlet
(Dryer/Cooking
Appliances)

DC Fast Charge

200+ miles
Per Hour

Highways,
Communities,
Destinations



CCS



CHAdeMO



Tesla



Charging
Station



PARADIGM SWITCH

How Fueling Cars is Changing with Electricity



Conventional Gas

VS.



Electric Vehicles



ALTERNATIVE FUEL CORRIDORS (AFC)



- PennDOT has nominated corridors over 6 rounds - includes interstates and portions of US 30, US 15, Route 1, and Route 422 - over 1,800 miles of roadway
- NEVI funding must be applied to AFCs until a “**Build-Out**” certification by FHWA

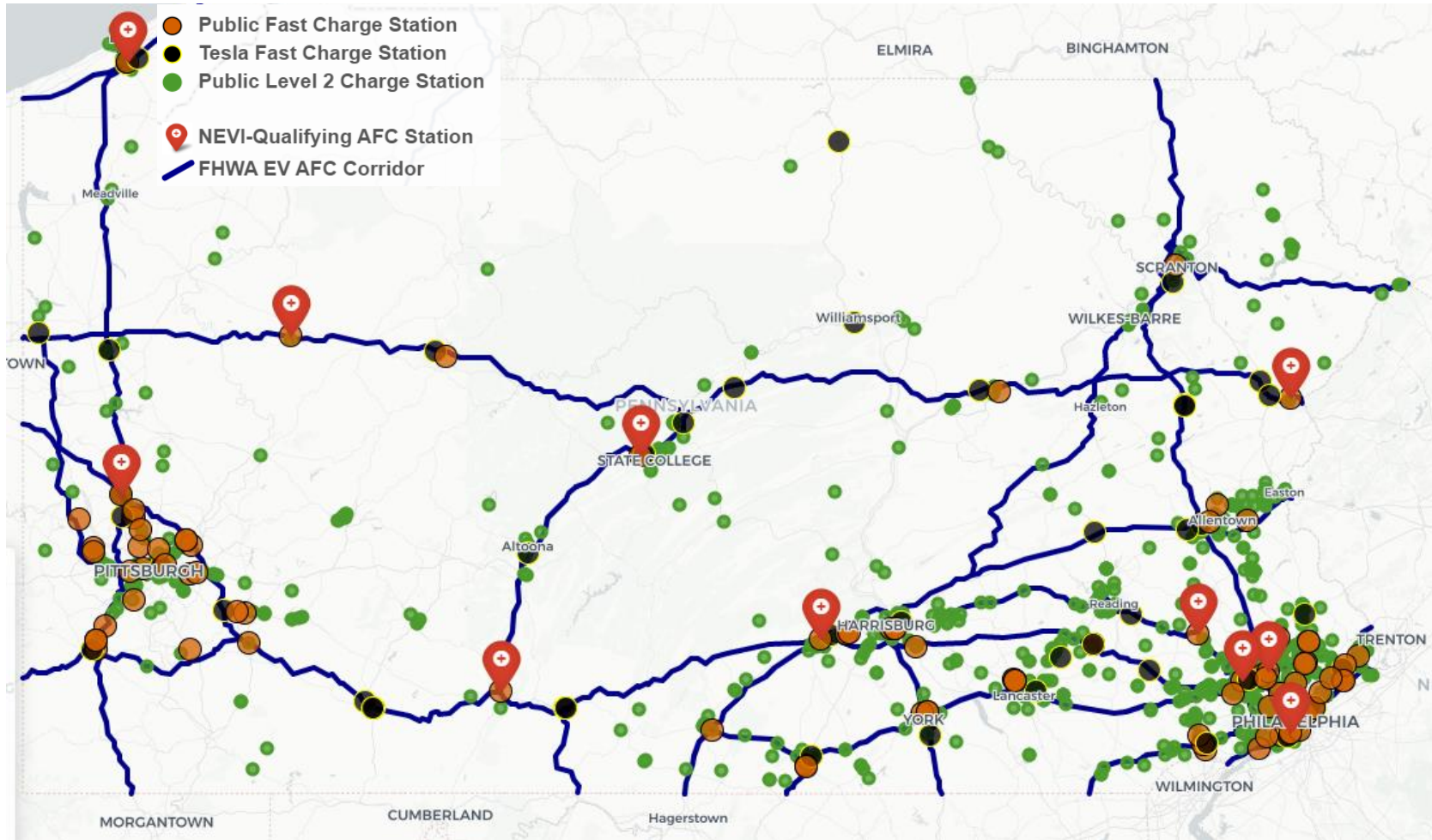


CONTINUE TO EVALUATE NEW AFCS

Route Corridor	From	To	Mileage	Population Centers Included	Existing Public DCFC or Tesla Station Near Corridor	Reason
US 22	MD Border (Lancaster County)	I-78 (Lehigh County)	88	Lancaster, Reading, Allentown	No Stations	Links key cities that do not have direct interstate connection
US 22 / US 322	I-81 (Dauphin County)	I-99 (Centre County)	84	Harrisburg, Lewistown, State College	No Stations	Provides connection between Harrisburg and State College (supports events at Penn State)
PA 6	US 11 (Lackawanna County)	US 19 (Erie County)	270	Towanda, Mansfield, Wellsboro, Warren	1 Tesla	PA Scenic Route supporting long distance travel
US 15	MD Border (Adams County)	I-76 (Cumberland County)	43	Gettysburg, Mechanicsburg	2 Public DCFC 1 Tesla	Key north-south corridor serving longer distance travel including freight movement. US 15 through Harrisburg is not included since serves more local travel.
	US 22/322 (Dauphin County)	CSV (Snyder County)	32	Harrisburg, Selinsgrove	No Stations	
	I-180 (Lycoming County)	NY Border (Tioga County)	62	Williamsport, Mansfield	1 Tesla	
I-180	CSV (Northumberland County)	US 15 (Lycoming County)	47	Shamokin Dam, Milton, Williamsport	1 Tesla	When combined with CSV completion will complement the US 15 corridor for regional travel.
US 219	MD Border (Somerset County)	NY Border (McKean County)	197	Somerset, Johnstown, Dubois	1 Tesla	Key north-south rural corridor serving longer distance travel.
US 22	I-99 (Blair County)	I-76 (Allegheny County)	76	Altoona, Blairsville, Monroeville	No Stations	Provides longer distance connection from Altoona to Pittsburgh and serves rural areas.

- The NEVI State Plan includes additional corridors under consideration
- More evaluation and stakeholder input is recommended to identify other potential corridors
- Focus should be on supporting fast-charging (DCFC) infrastructure
- Corridors will most likely have higher numbers of long-distance travel
- Opportunities to further address rural and other disadvantaged communities

PUBLIC CHARGING STATIONS



- Websites
- Apps
- Trip Planners
- Resources:
 - 511PA
 - [Penndot.pa.gov/EV](https://penndot.pa.gov/EV)
 - Alternative Fuel Data Center (AFDC)
 - PlugShare
 - ChargeHub
 - In-car support

Over 2,800 public plugs at over 1,100 locations

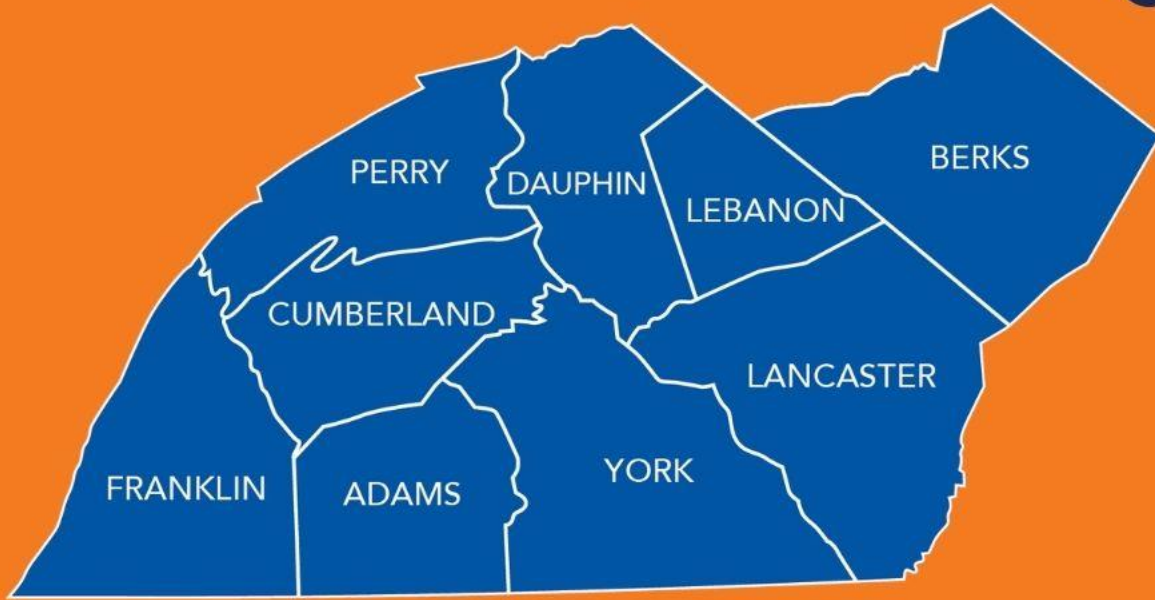




Commuter Benefits: Providing transportation resources to employees



Commuter Services of PA



Service Area:

Available to employers &
commuters within 9 counties

- Program of Non-Profit SRTTP
- Funded by Federal Highway
- Direct partnership with PennDOT
- Educate employers & employees on commute options
- Provide FREE green transportation resources
 - Carpooling
 - Vanpooling
 - Bicycling
 - Walking
 - Transit
 - Teleworking

Goals

- Reduce traffic congestion
- Improve air quality
- Take single-driver cars off the road
 - Provide employers with transportation solutions
 - Help employees find more sustainable ways to work



WORKFORCE



Transportation Resources as a Workforce Development Strategy

Employers recognize how the commute to work can play a vital role in the job performance of their employees, as well as become a barrier to employment. Those employers who take the next step to create positive commute experiences will reap the financial benefits to the bottom line of doing business. Commuter Services can help provide transportation resources to help employers with recruitment and retention.

Commuter Perks Program

Commuter Services helps employers by providing **FREE** services that aid their employees in the search for a better commute and therefore a longer, more productive tenure with their place of business.



CARPOOL/VANPOOL PROGRAMS

Employees can cut their commute costs up to **50%** by sharing a ride in a carpool or vanpool. Employers can reduce expensive parking infrastructure costs or provide solutions to those seeking employment.



TRANSIT INFORMATION SERVICES

Transit offers a reliable mode of transportation at an economical cost. Employers can make transit passes available for purchase at the worksite; offer pre-tax benefits; or coordinate with the transit agency to assure bus stops are convenient to the worksite.



BIKING/WALKING RESOURCES

Biking and walking are great options that can reduce employees' commuting costs while offering regular exercise. Employers can offer convenient bike racks, lockers, and/or shower facilities.

Employer & Employee Tools

Based on the needs and culture of the organization, our staff will provide turnkey tools to educate employees on their different commute choices.



EMPLOYEE COMMUTE ANALYSIS

This first step to assisting is determining current commuting behaviors. Our staff will provide mapping that shows potential carpool/vanpool groups and available transit in relation to employees' home locations.



TRANSPORTATION EVENTS

Outreach promotions will be customized based on your worksite. We provide events such as: Presentations, Transportation Days, Lunch and Learns, Meet Your Match, and Sur-Prize Patrols. These can be hosted on-site or as a virtual option.



TELEWORKING

The pandemic has shown employees can be successful by working remotely. Teleworking can help improve productivity, reduce costs and enhance employee morale. We can help provide you with knowledge and resources to establish policies.

COMMUTE PA

Through our customized rideshare and rewards program, commuters can find carpool or vanpool arrangements.

1

ENROLL

Download app or visit website to get started.

2

COMPLETE PROFILE

Include work address and commute details.

3

FIND RIDES

Search for others with similar commute patterns and connect.

4

RECORD TRIPS

Record all green trips both work and personal.

5

GET REWARDED

Redeem points for coupons or enter monthly drawings.

Helps those looking to cut down on commuting costs as well as bridge the gap for those needing transportation to work.

Emergency Ride Home

Commuter Services knows that employees may have concerns with carpooling, riding the bus, biking, or walking to work and feel that they need their car every day "just in case." An employee can be reimbursed for a ride home from work.

- Enrolled in Commute PA
- Using a non-drive alone mode to work and recording in Commute PA
- Qualified emergencies include, but not limited to:
 - Personal/family emergency or illness
 - Unexpected overtime
 - Transit route/train cancelled or delayed more than 1 hour





Thank you for your time!

Stacy Newcomer

Deputy Project Manager

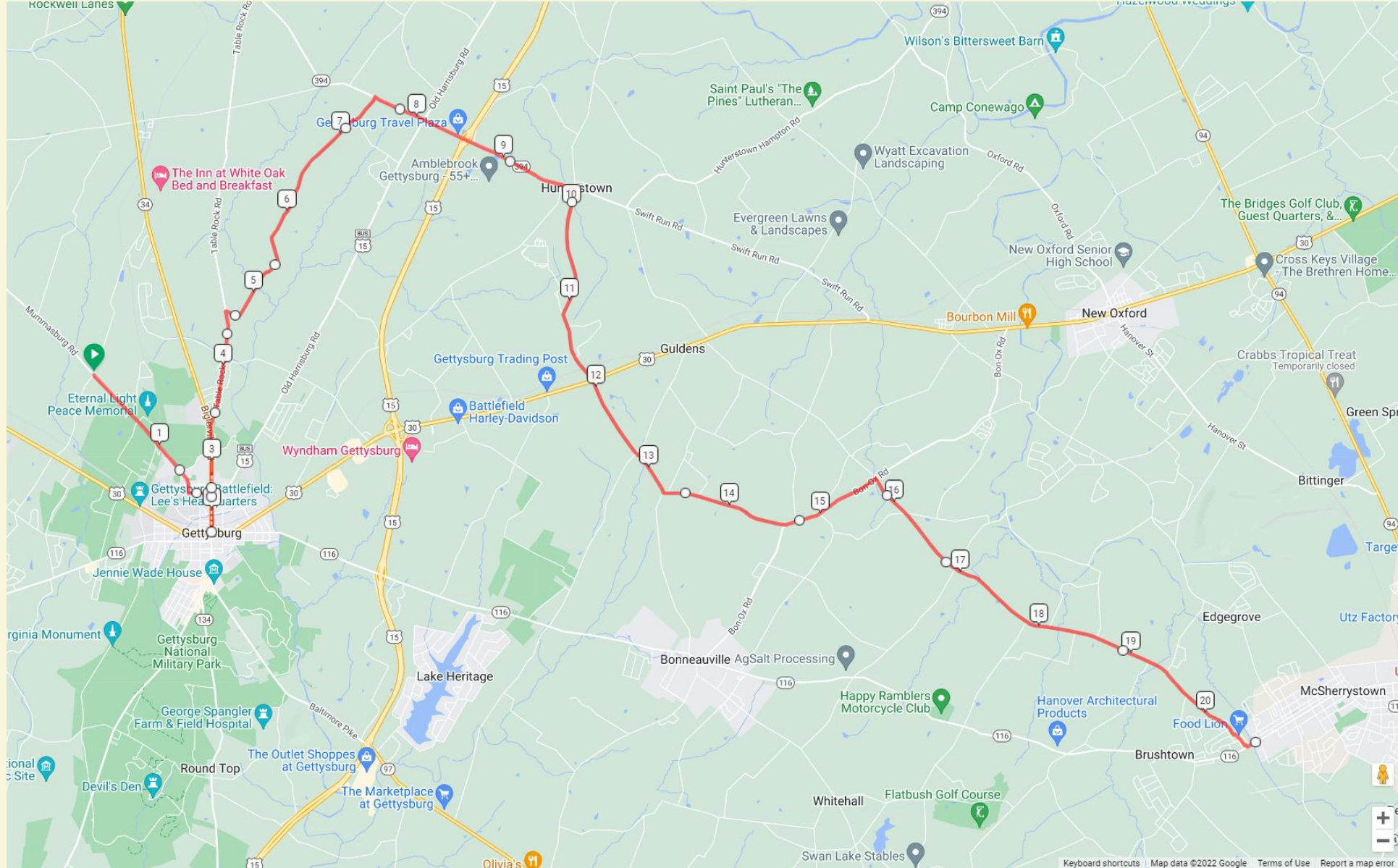
Stacy.Newcomer@PaCommuterServices.org

Direct: 717.650.8357

Office: 717.718.0015

PaCommuterServices.org

9/11 National Memorial Trail in Adams County



SIGNS for
9/11 National Memorial Trail



NOTE: ALL SIGN SPECIFICATION, PRODUCTION AND INSTALLATION SHALL BE FABRICATED AND CONDUCTED IN CONFORMANCE WITH THE STANDARDS SET FORTH IN PUBLICATION 408 OF THE PENNSYLVANIA DEPARTMENT OF TRANSPORTATION (2016 OR CURRENT) AND THE FEDERAL HIGHWAY ADMINISTRATION MANUAL ON UNIFORM TRAFFIC CONTROL DEVICES (MUTCD 2009 WITH 2012 REVISIONS OR CURRENT) .

NOTE: ALL SIGNS ALONG NON-PennDOT STATE ROUTES SHALL BE 9"X12"; ALL SIGNS ALONG PennDOT ROUTES SHALL BE 18"X24" IN THE LOCATIONS AND QUANTITIES AS INDICATED ON SIGN TAB SHEET T1.

9/11 National Memorial Trail in Adams County

Roads in Adams County for the 9/11 National Memorial Trail
Go to – 911trail.org, then Visit the Trail, Interactive Map

Dist	Type	Note	Next
0.0	📍	Start of route	1.2
1.2	➡	Slight R to stay on US-30 E	1.5
2.7	➡	R onto Old Rte 30	6.2
8.8	⬅	L onto Fairview Fruit Rd	1.3
10.1	➡	R onto Hilltown Rd	1.2
11.3	➡	R onto Mummasburg Rd	4.5
15.7	⬆	Continue onto College Ave	0.1
15.8	⬅	L onto W Lincoln Ave	0.2
16.1	➡	R onto Carlisle St	0.4
16.5	⬆	Enter the traffic circle	0.1
16.5	⬆	Exit the traffic circle onto Carlisle St/ Lincoln Square	1.1

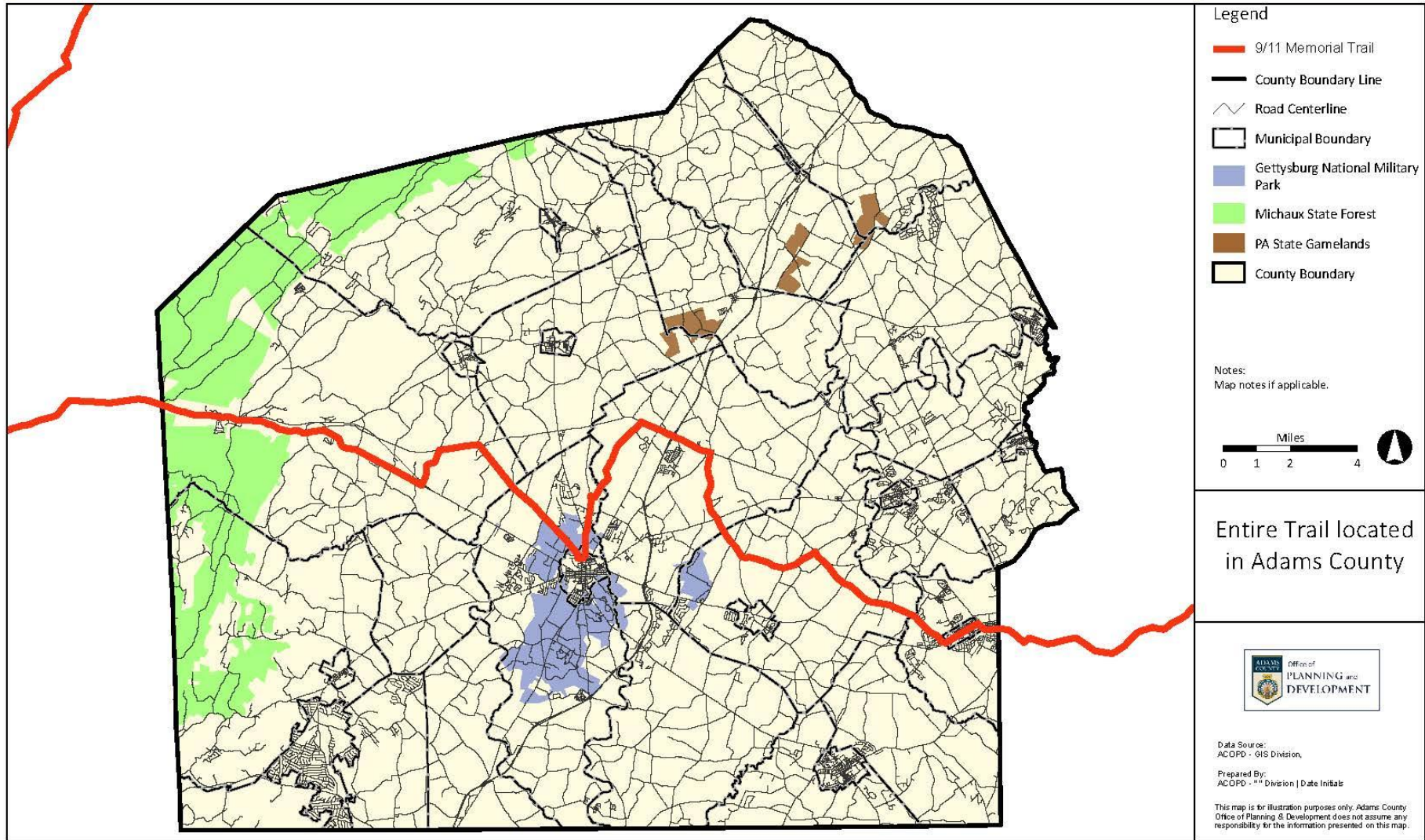
16.5 miles. +716/-1165 feet

Dist	Type	Note	Next
17.6	➡	Slight R onto Table Rock Rd	1.2
18.8	➡	R onto Miller Rd	0.5
19.3	⬆	Continue onto Good Intent Rd	2.5
21.8	➡	R onto PA-394 W	2.3
24.1	➡	R onto Granite Station Rd	3.5
27.5	⬅	L onto Tall Oaks Rd	1.3
28.9	⬆	Continue onto Bon-Ox Rd	1.1
29.9	➡	R onto Centennial Rd	4.9
34.8	⬅	L onto PA-116 W	1.2
36.0	⬆	Continue onto W Elm Ave	0.8
36.8	📍	End of route	0.0

20.3 miles. +692/-619 feet

9/11 National Memorial Trail in Adams County

9/11 National Memorial Trail in Adams County



2021-2024 TIP Administrative Actions

FFY 2021-2024 TIP MODIFICATIONS FORM

[illegible]

2021-2024 TIP Administrative Actions

3	US 15 Preservation NorthBound 15/059 Adams	116595	PE	Before		581						200						Decreasing the PE phase of US 15 Preservation NorthBound in FFY 2022 for \$142,617 to the current estimated cost. This project consists of a pavement preservation on US 15 (Blue-Gray Highway) from the Maryland line to PA 394 (Shrivers Corner Road) in Freedom, Cumberland, Mount Joy and Straban Townships. This project has a current estimated let date of Dec. 14, 2023.	
				Adjust		581						-143							
				After		581													
4	Piney Creek Bridge 2 97/010 Adams	90692	FD	Before		185						150						Increasing the FD phase of Piney Creek Bridge 2 in FFY 2022 for \$134,417 to the current estimated cost. This project consists of a bridge replacement on PA 97 over Tributary to Piney Creek in Germany Township, Adams County. This project has a current estimated let date of May 18, 2023.	
				Adjust		185													
				Adjust		581						134							
				After		185						150							
				After		581						134							
3	PA 116 over Trib Marsh Crk 116/043 Adams	106665	ROW	Before														Adding the ROW phase of PA 116 over Trib Marsh Crk in FFY 2022 for \$8,200 to the current estimated cost. This project consists of a bridge rehabilitation on PA 116 (Fairfield Road) over Tributary to Marsh Creek in Highland Township, Adams County. This project has a current estimated let date of May 9, 2024.	
				Adjust		581						8							
				After		581													
Program Summary - Net Changes				Before FFY Totals			0	0	0	0	1,176,273	0	0	2,184,000	0	0	111,245	0	0
				Adjustments			0	0	0	0	0	0	0	0	0	0	0	0	
				After FFY Totals			0	0	0	0	1,176,273	0	0	2,184,000	0	0	111,245	0	

2021-2024 TIP Administrative Actions

FISCAL CONSTRAINT CHA
FFY 2021-2024 TIP Highway/

Administrative Action (MA ID: 126871) Adams TIP				Fund Type		FFY 2021			FFY 2022			FFY 2023			FFY 2024			
Project Title	MPMS	Phase	Amts	Fed	State	Federal	State	Loc/Oth	Federal	State	Loc/Oth	Federal	State	Loc/Oth	Federal	State	Loc/Oth	
Bridge Reserve	87792	CON	Before	BRIP														
			Before	BOF														
			Adjust	BRIP									1,364,222					
			Adjust	BOF														
			After	BRIP									1,364,222					
Adams			After	BOF														
SR 116 Bridge over Conewago Creek		CON	Before	BRIP					1,304,000									
			Before	NHPP						1,114,149				1,364,222				
			Before	STP			20,008			962								
			Adjust	BRIP														
116/051	113071	CON	Adjust	NHPP				1,364,222				(1,364,222)						
			Adjust	STP														
Adams			After	BRIP					1,304,000									
			After	NHPP						2,478,371								
			After	STP			20,008			962								
Before Totals						\$20,008	\$0	\$0	\$2,419,111	\$0	\$0	\$1,364,222	\$0	\$0	\$0	\$0		
Adjustment Totals						\$0	\$0	\$0	\$1,364,222	\$0	\$0	\$0	\$0	\$0	\$0	\$0	\$0	
After Totals						\$20,008	\$0	\$0	\$3,783,333	\$0	\$0	\$1,364,222	\$0	\$0	\$0	\$0	\$0	

NOTES

ART
/Bridge

FFY 2025			FFY 2026			FFY 2027			FFY 2028			FFY 2029-2032			Remarks
Federal	State	Loc/Oth	Federal	State	Loc/Oth	Federal	State	Loc/Oth	Federal	State	Loc/Oth	Federal	State	Loc/Oth	
															Reserve Line Item utilized as balancing source to maintain fiscal constraint.
															Advancing funds due to August Redistribution. Funds returned to reserve line item.
\$0	\$0	\$0	\$0	\$0	\$0	\$0	\$0	\$0	\$0	\$0	\$0	\$0	\$0	\$0	Actions do not affect air quality conformity.
\$0	\$0	\$0	\$0	\$0	\$0	\$0	\$0	\$0	\$0	\$0	\$0	\$0	\$0	\$0	
\$0	\$0	\$0	\$0	\$0	\$0	\$0	\$0	\$0	\$0	\$0	\$0	\$0	\$0	\$0	
\$0	\$0	\$0	\$0	\$0	\$0	\$0	\$0	\$0	\$0	\$0	\$0	\$0	\$0	\$0	

Next ACTPO Meeting

January 25, 2023

1:00 p.m.