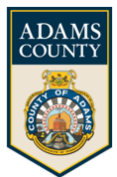


# ACTPO

## January 24, 2024



Office of  
**PLANNING and  
DEVELOPMENT**

# Staff Updates

Significant Developments

Development Name	Resubmission	Municipality	School District	Street Location	Total New Residential Lots or Units (≥ 25)	Total Building Square Feet (≥30,000) for Industrial, Commercial, or Mixed Use Development
Bridgewater Landing at Cross Keys Village	NO	Oxford	CVSD	382 Brickyard Rd		59 (blank)

# Staff Updates

## **HOP/Traffic Study/Project Meetings**

- **SRTP/PA Commuter Services**
  - Board Meeting (November)
  - Board Meeting (January)
- **PennDOT / Project Meetings**
  - Route 94 Corridor Study Management Meeting (November, December, January )
  - Route 94 Corridor Study Kick-Off Meeting (January)

# Staff Updates

## **HOP/Traffic Study/Project Meetings**

- PennDOT TIS Scoping Meetings
  - Homewood at Plum Creek (Penn Township, York County)
  - WellSpan Facility (Cumberland Township)
  - North Point – Crown Community Development (Straban Township)



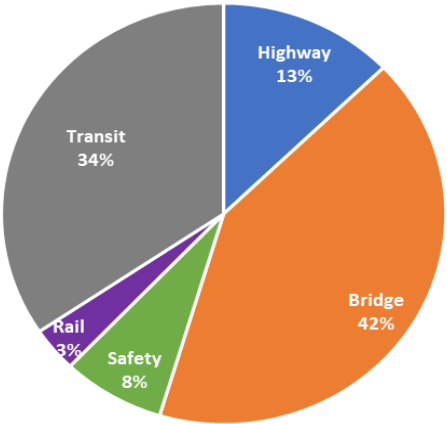
# FFY 2023 Adams County Obligation Report

## Previous FFY Obligated Fund Amounts

Year	Obligated Funds	Number of Projects	De-obligated Funds
FFY 2019	\$2,910,953	8	(\$302,580)
FFY 2020	\$12,155,436	6	(\$627,459)
FFY 2021	\$4,635,797	10	(\$232,058)
FFY 2022	\$9,664,325	11	(\$2,747,878)
FFY 2023	\$8,142,603	12	(\$245,841)

## FFY 2023 Summary

FUNDING CLASS	OBLIGATED	%	DE-OBLIGATED	%
Highway	\$1,041,572	13%	(\$13,280)	5%
Bridge	\$3,408,733	42%	(\$232,561)	95%
Safety	\$609,701	7%	\$0	0%
Rail	\$279,690	3%	\$0	0%
Transit	\$2,802,907	34%	\$0	0%
Totals:	\$8,142,603		(\$245,841)	

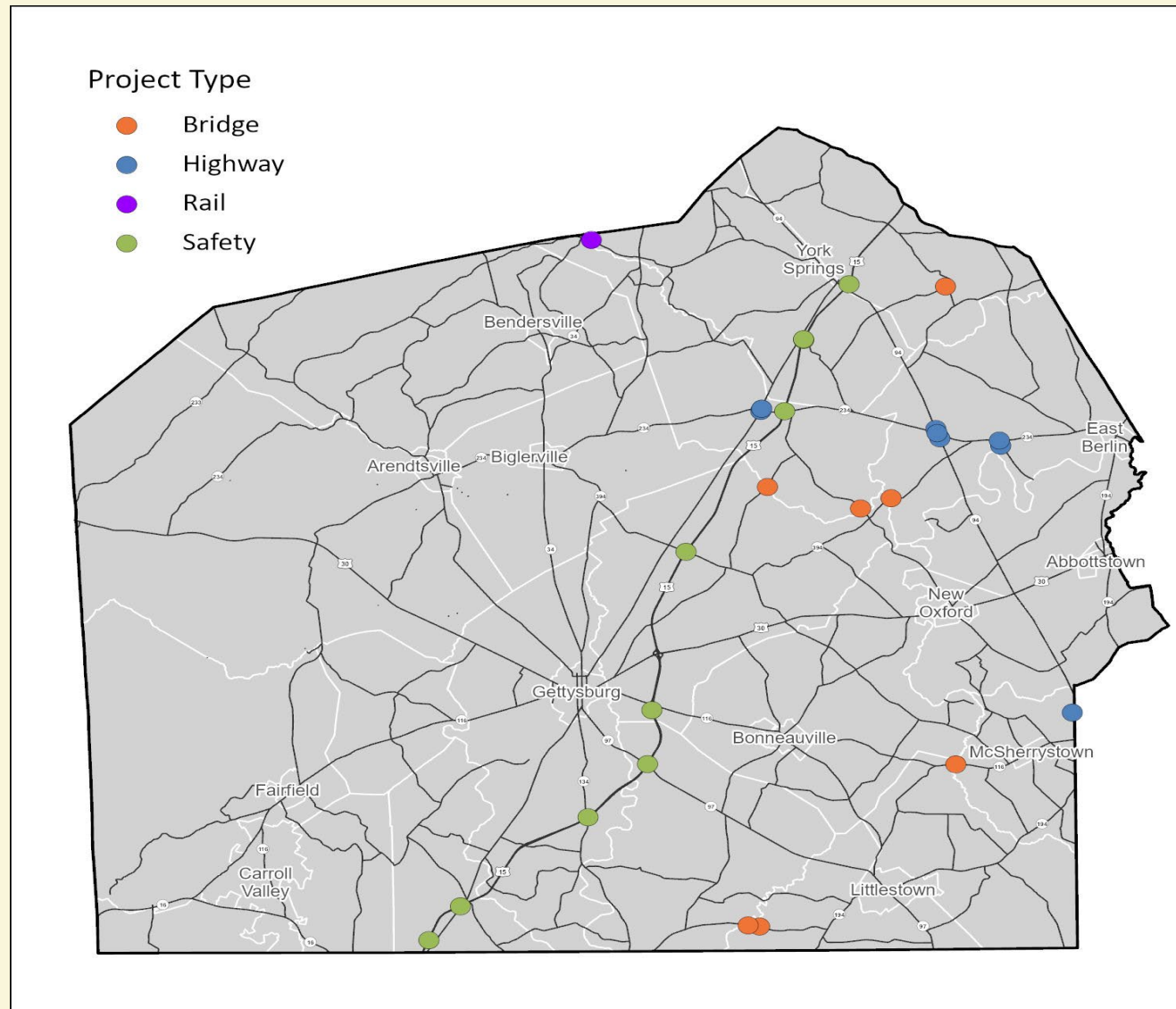


# FFY 2023 Adams County Obligation Report

## FFY 2023 Federally Obligated Projects in Adams County Obligations from 10/1/2022 to 9/30/2023

MPMS	PROJECT TITLE	MUNICIPALITY	OBLIGATED	DE-OBLIGATED
<b>HIGHWAY PROJECTS</b>				
58137	Eisenhower Drive Extension	Conewago	\$113,585	
94897	PA 94 & 234 Intersection Improvements	Reading	\$707,602	
116594	East Berlin Road and Peepytown Road	Reading	\$220,385	
73602	PA 234 & 3001 Improvements	Tyrone Huntington		\$13,280
	<b>Subtotals:</b>		<b>\$1,041,572</b>	<b>\$13,280</b>
<b>BRIDGE PROJECTS</b>				
113071	SR 116 Bridge over Conewago Creek	Conewago	\$404,780	
90698	Hunterstown Hampton Road Bridge over Conewago Creek	Straban Reading	\$390,000	
73854	Latimore Valley Road Bridge	Latimore	\$369,091	
78640	Conewago Creek Bridge	Straban	\$1,352,232	
78642	Red Bridge Road over Conewago Creek	Straban	\$453,000	
90740	Alloway Creek Bridge	Germany Mount Joy	\$439,630	
18049	Mengus Mill Road Bridge	Germany		\$232,561
	<b>Subtotals:</b>		<b>\$3,408,733</b>	<b>\$232,561</b>
<b>SAFETY PROJECTS</b>				
114856	TSMO Adams County Devices	Adams	\$609,701	
	<b>Subtotals:</b>		<b>\$609,701</b>	
<b>RAIL PROJECTS</b>				
95729	Peach Glen RR Crossing	Huntington	\$279,690	
	<b>Subtotals:</b>		<b>\$279,690</b>	
<b>TRANSIT PROJECTS</b>				
110666	Operating Assistance York	Regionwide	\$2,802,907	
	<b>Subtotals:</b>		<b>\$2,802,907</b>	

# FFY 2023 Adams County Obligation Report



# Staff Updates – ACTPO Bylaws Review

## ***Minor Revisions/Format:***

- Versioning - clearly state the dates of adopted bylaws versions
- Organization name changes as necessary (Ex. AEA, SRTA)
- Meeting location / County website

## ***Content Revisions/Additions:***

- **Approved meeting minutes** – official meeting record
- **Hybrid meeting format**
- **Document process for reappointments**

## ***Membership***

- **Retain current voting seat structure**
  - Urban Area Representation
- **Planning (Community) Partners** – Reference listed stakeholders in the Public Participation Plan

Adams County Transportation Planning Organization

# DRAFT PUBLIC PARTICIPATION PLAN



[www.adamscountypa.gov](http://www.adamscountypa.gov)

Adopted xxxxx, 2023



## POPULATION

**2020**

**103,852**

+2.4%

**2010**

**101,407**

+11.1%

**2000**

**91,272**

+16.6%

## AGE BY GENERATION\*

**Silent & Greatest (75+ Yrs)**

**9,168**

**Baby Boomers (55 - 74 Yrs)**

**29,117**

**Generation X (40 - 54 Yrs)**

**18,629**

**Millennials (25 - 39 Yrs)**

**16,615**

**Generation Z (10 - 24 Yrs)**

**19,598**

**Gen Alpha (Under 10 Yrs)**

**10,725**

## LANGUAGE SPOKEN AT HOME

**English only: 94%**

**Spanish: 4.6%**

**Other Indo-European Languages: 1%**

**Asian & Pacific Islander Languages: <1%**

**Other Languages: <1%**

## PEOPLE LIVING IN POVERTY

**7.8%**

## MEDIAN HOUSEHOLD INCOME

**\$72,492**

## PEOPLE LIVING WITH A DISABILITY

**14.1%**

## HOUSEHOLDS WITH NO COMPUTER OR SMARTPHONE

**9.5%**

## ETHNICITY

**White: 88.1%**

**Black or African American: 1.5%**

**American Indian and Alaska Native: <1%**

**Asian: <1%**

**Native Hawaiian and Other Pacific Islander: <1%**

**Some Other Race: 3.7%**

**Two or More Races: 5.4%**

\*Widely accepted generation tiers not directly applicable to census age delineations but are within 2-3 years  
Data Sources: 2021 ACS 5-Yr Estimates; 2020 Decennial Census

# GOALS

Recognize that all interested and affected parties in Adams County, including traditionally underserved populations, have a stake in the transportation planning process.

Ensure that interested parties have an active and ongoing role in the regional transportation planning process.

Use multiple methods to distribute information so that all interested parties have access to the planning process.

Provide information related to the planning process in a clear, concise, and understandable manner.

Document what we learn from interested parties for future consideration by the ACTPO Board, ACOPD staff, and others to improve our outreach and participation efforts.

Ensure the engagement process remains relevant and effective.

## PUBLIC OUTREACH PRINCIPLES

Identify a broad list of stakeholders, including traditionally underserved populations, for public participation opportunities.

Broadly notify interested parties through multiple channels about opportunities to be involved in the planning process.

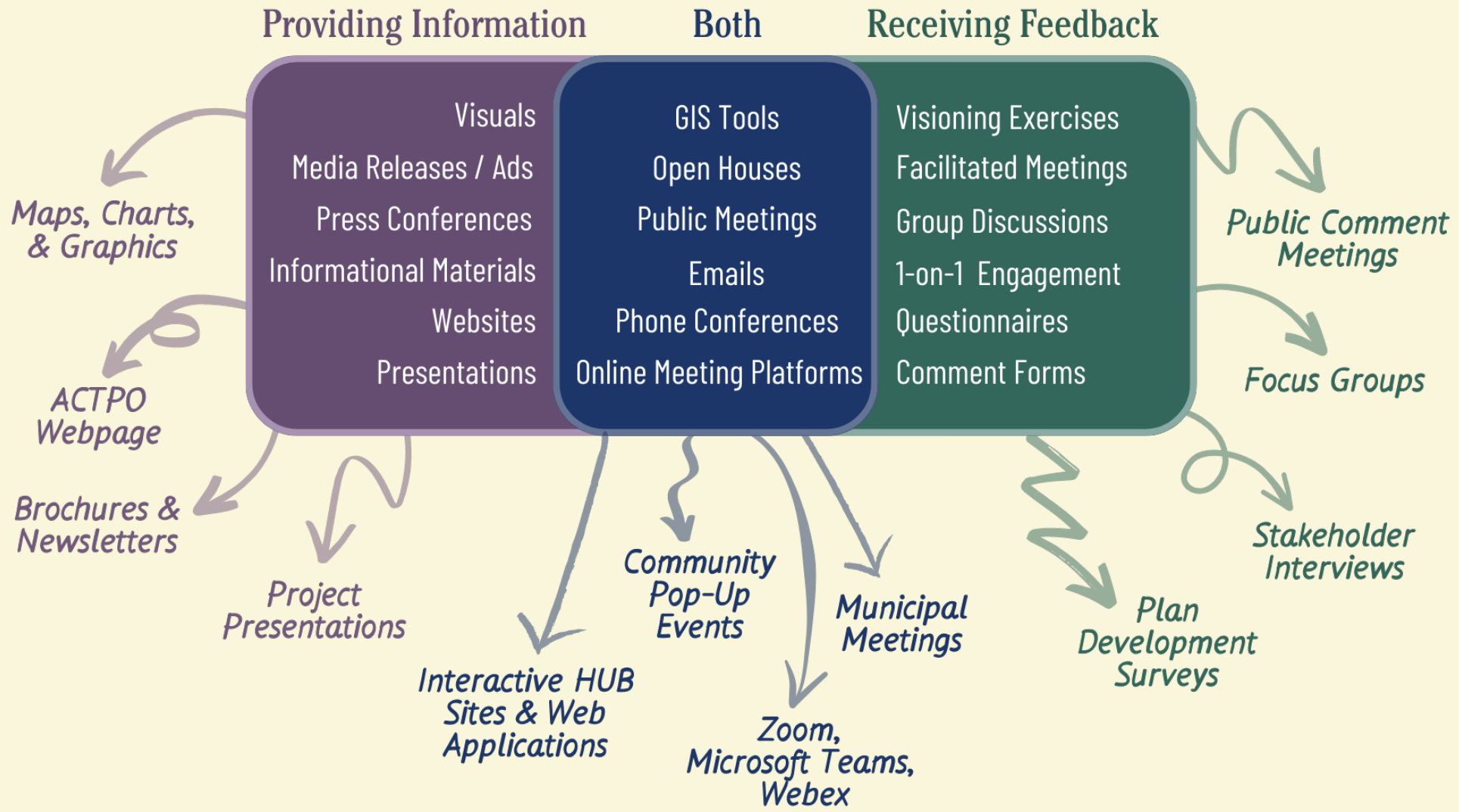
Tailor outreach strategies to the needs of specific stakeholder groups.

Hold meetings at convenient and accessible locations and times.

Incorporate public views and preferences into the decision-making process.

Encourage participation by promoting respect for different opinions.

Continuously evaluate the engagement process to enhance public participation strategies.





# PA 94 – Cross Keys Corridor Improvement Study

---

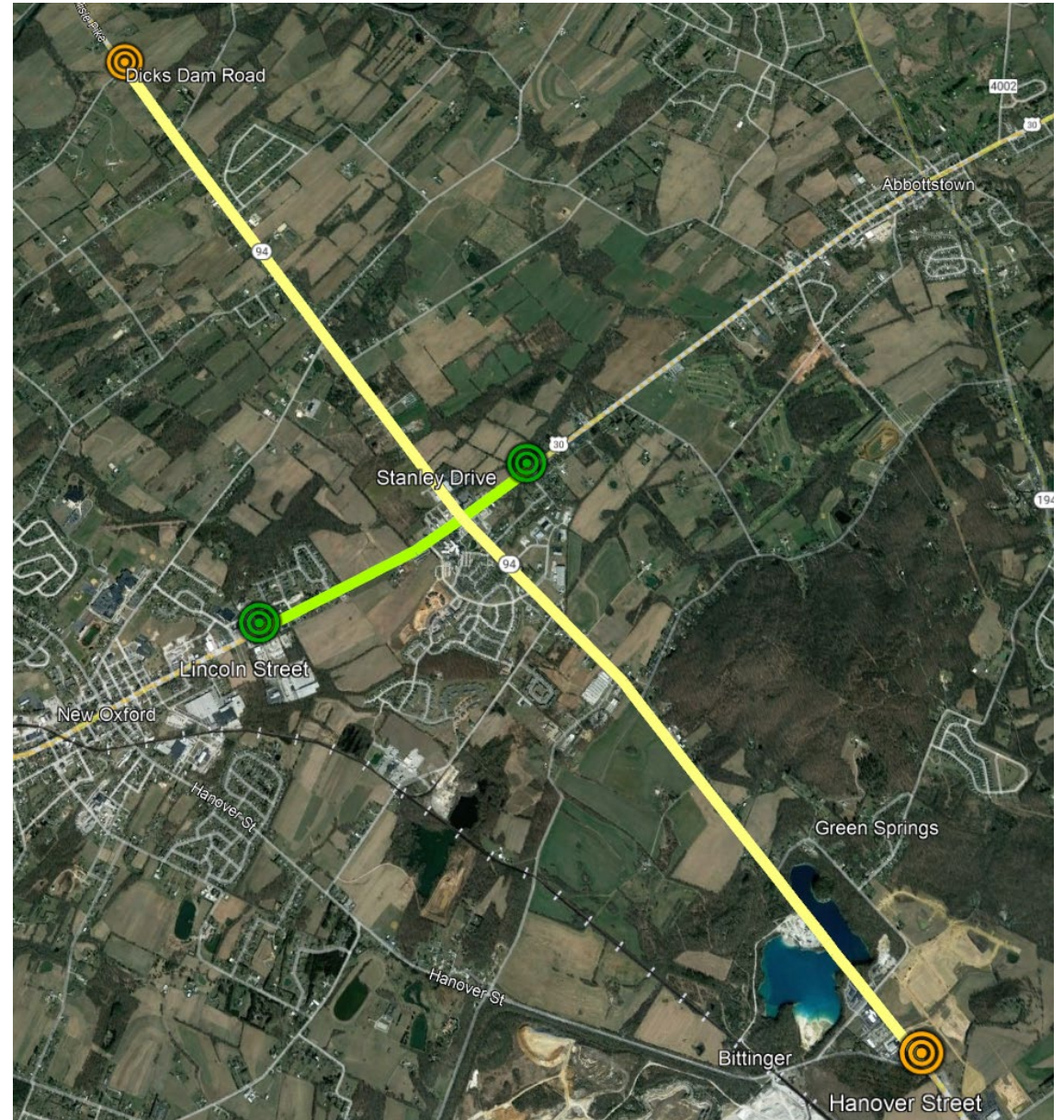


ACTPO Meeting  
January 24, 2024



# Study Area Overview

- Three municipalities: Berwick, Hamilton, Oxford Townships
- Centered on a 5-mile portion of **PA 94** between Dicks Dam Road and Hanover Street
- Includes **US 30** between Lincoln Street and Stanley Drive



# Study Objectives

1

Improve overall road network and connectivity

2

Improve safety and reduce accidents.

3

Improve access for transit and freight.

4

Coordinate transportation improvements with land use and economic development opportunities

# Study Elements

Data Collection

Public Survey

Field View

Alternatives  
Analysis

Stakeholder  
Engagement

Implementation  
Framework

# Project Schedule

Task Description	NOV	DEC	JAN	FEB	MARCH	APR	MAY	JUNE
1 Data Collection & Analysis								
1a Kickoff Meeting								
1b Data Collection								
1c Online Public Survey								
1d Field Review								
2 Alternatives Analysis & Development								
2a Field Review Findings								
2b Initial Recommendations								
2c Stakeholder Meetings								
2d Final Recommendations								
3 Final Report								
4 Public Involvement/Outreach								
Advisory Committee Meetings	1			2		3	4	
Deliverables			A			B		C

## Advisory Committee Meetings

- 1 Kickoff
- 2 Existing Conditions Presentation
- 3 Review/Vet Draft Recommendations
- 4 Review Draft Final Report

## Deliverables

- A Existing Transportation/Land Use Conditions
- B Draft Report
- C Final Report

## MPO Meeting Slate

- January 24, 2024
- March 27, 2024
- June 26, 2024



# Study Status

- Initial data collection efforts completed in late December/early January
- Refinements/additions being made based on Advisory Committee feedback
- Corridor field view to be held in February





# Preliminary Data Collection Highlights

Zoning & Land  
Use

Public  
Transportation

Freight

Traffic Safety  
& Operations



# Next Steps

- Schedule and conduct field view
- Develop and initiate public survey
- Begin stakeholder outreach meetings



# Contact Information



**Andrew Merkel, AICP**

Email: [amerkel@adamscountypa.gov](mailto:amerkel@adamscountypa.gov)



**Brian Funkhouser, AICP**

Email: [brian.funkhouser@mbakerintl.com](mailto:brian.funkhouser@mbakerintl.com)

# Active Transportation and Safety Analysis Tool

## ***Adams County Active Transportation and Safety Tool (ATST):***

<https://storymaps.arcgis.com/stories/18a7af892d7947baa22c509d89d2cc9c>

### ***Background:***

- The concept of an on-road biking “stress test” analysis originally began as part of a County Bicycle and Pedestrian Plan. This Plan was not completed, but the analysis and recommendations were pulled into the LRTP, ONWARD 2050, and became a part of the Active Transportation component.
- The Active Transportation and Safety Tool is the implementation of an ONWARD2050 recommendation.
- A “test” group of interested individuals reviewed the Tool and provided valuable feedback (before Christmas).

# Active Transportation and Safety Analysis Tool

## ***Adams County Active Transportation and Safety Tool (ATST):***

<https://storymaps.arcgis.com/stories/18a7af892d7947baa22c509d89d2cc9c>

### ***Analysis/Tool:***

- The Tool itself consists of a Story Map, which presents background information to the user about the concept, data, use, and limitations.
- One of the main components is the On-Road Active Transportation Analysis, where the original “stress test” concept was refined and levels of traffic stress determined.
  - Inputs were assigned scores based on characteristics that includes a road segment’s: Speed limit, shoulder width, functional classification, bicycle infrastructure, and sidewalks
  - Which were classified into 5 levels of traffic stress that range from: comfortable to extreme
- Also a Safety Needs Analysis was developed to help identify locations that may benefit from additional safety measures near schools.



# Active Transportation and Safety Analysis Tool

## ***Adams County Active Transportation and Safety Tool (ATST):***

<https://storymaps.arcgis.com/stories/18a7af892d7947baa22c509d89d2cc9c>

## ***Feedback/Future:***

- Primary feedback from the test group included the use of traffic volumes. This was initially included, but because it is not available consistently county-wide, was removed from the analysis.
- Additional suggestions included recommending SALDO amendments and working to get safe routes included when a development is built. There are recommendations related to these suggestions in the LRTP.
- Next step/goal is to rework the ONWARD2050 Hub site to help highlight the Plan's recommendations and implementation with other transportation-related information.
- This Tool will be available through the GIS Hub on the County's homepage as well as Transportation/ ACTPO section of the Planning Office website.

# Performance Measures for Adams County

MAP-21 and FAST Act established a series of performance measures for State DOT's and MPO's to work towards.

- Safety (PM-1) – Last adopted on January 26, 2022 (Adopt yearly)
  - PM-1 measures how safe the transportation network is for users.
    1. Number of Fatalities
    2. Rate of Injuries
    3. Number of Serious Injuries
    4. Rate of Serious Injuries
    5. Number of non-motorized fatalities and serious injuries
- Pavement and Bridge Conditions (PM-2) – Adopted on October 31, 2018; Updated January 27, 2021 (Adopt every 4 years)
  - PM-2 measures the condition of the transportation network.
  - Assess the condition of the Interstate and National Highway System (NHS) pavements and bridges.
- System Performance (PM-3) – Adopted on October 31, 2018; Updated January 27, 2021 (Adopt every 4 years)
  - PM-3 measures the performance of the system (or the lack thereof).
  - Assess the level of reliability and congestion of the transportation network.

## Performance Measures for Adams County – PM-1

### Safety Baselines (PM-1)

Performance Measure	2012-2016 Baseline	2013-2017 Baseline	2014-2018 Baseline	2015-2019 Baseline	2016-2020 Baseline	2017-2021 Baseline	2018-2022 Baseline
Fatalities	12.8	9	11.2	12.4	12.8	12.0	13.6
Fatality Rate	1.433	1.008	1.253	1.380	1.461	1.363	1.547
Serious Injuries	34.0	41.6	42.8	45.8	50.4	50.0	46.2
Serious Injury Rate	3.805	4.659	4.787	5.098	5.754	5.681	5.254
Non-Motorized Fatalities / Serious Injuries	3.5	2.8	4	3.6	4.4	3.8	3.6

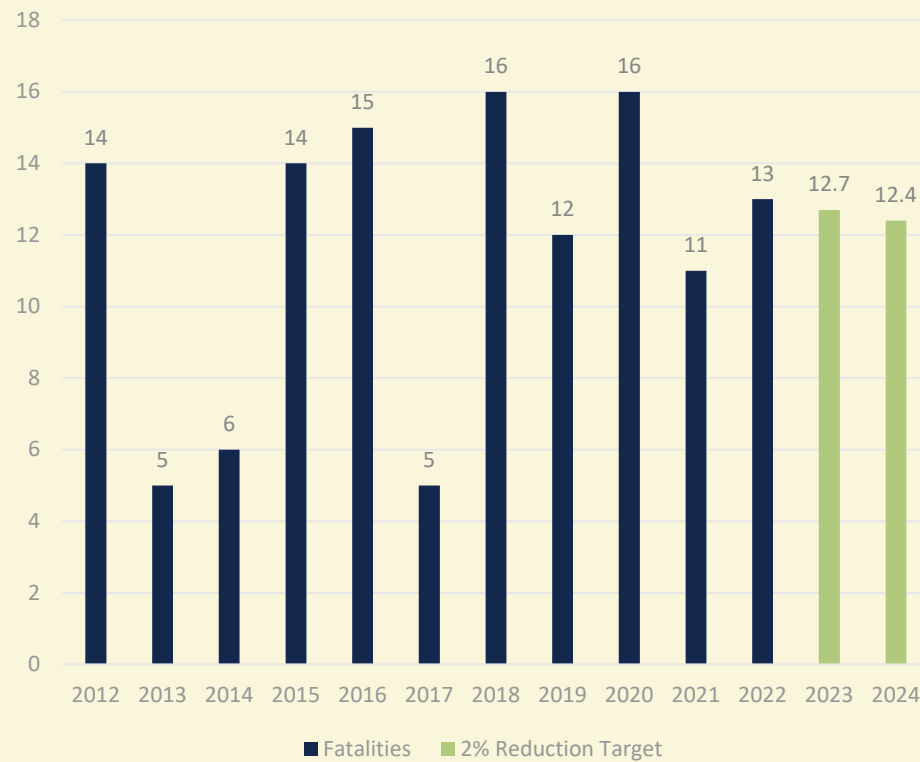
## Performance Measures for Adams County – PM-1

### Safety Targets (PM-1)

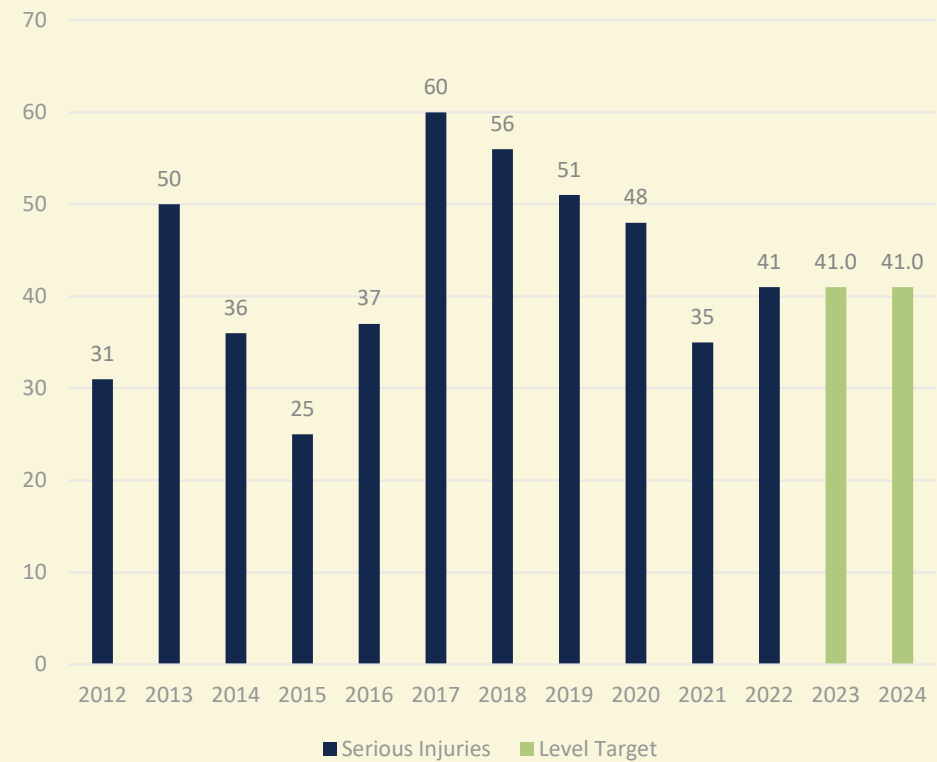
Performance Measure	2014-2018 Targets	2015-2019 Targets	2016-2020 Targets	2017-2021 Targets	2018-2022 Targets	2019-2023 Targets	2020-2024 Targets
Fatalities	10.8	8.7	13.5	11.3	15.0	12.1	13.0
Fatality Rate	1.218	0.956	1.492	1.250	1.816	1.361	1.480
Serious Injuries	35.8	47.7	52.6	53.8	50.2	40.8	41.2
Serious Injury Rate	4.044	5.242	5.812	5.953	6.079	4.590	4.690
Non-Motorized Fatalities / Serious Injuries	2.8	2.9	6.9	2.4	4.8	2.2	2.6

# Performance Measures for Adams County – PM-1

Adams MPO Fatalities



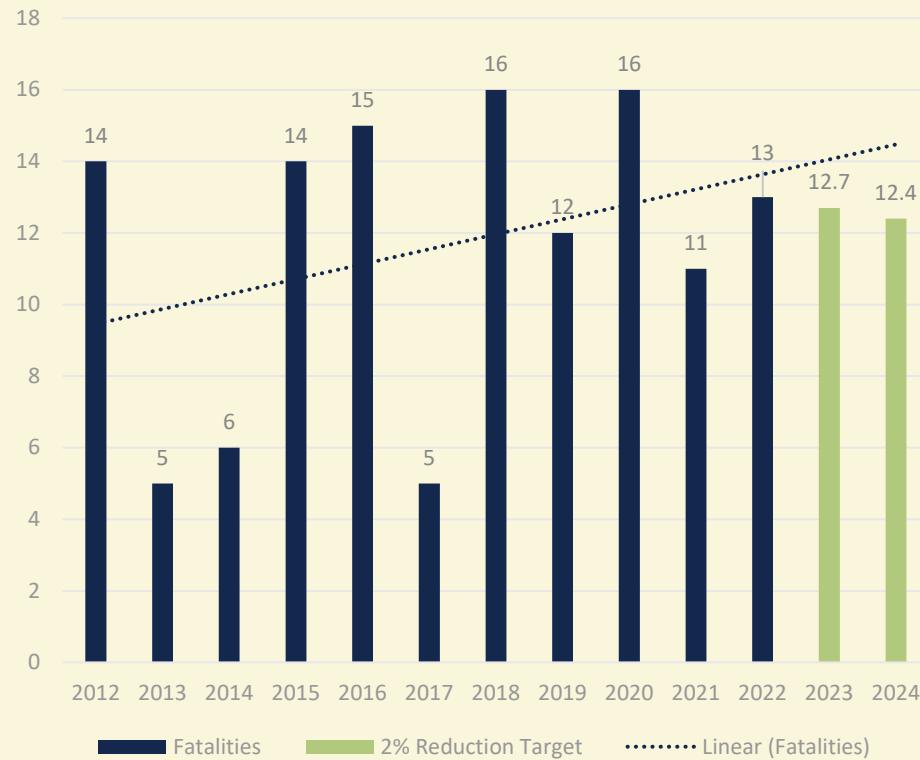
Adams MPO Serious Injuries



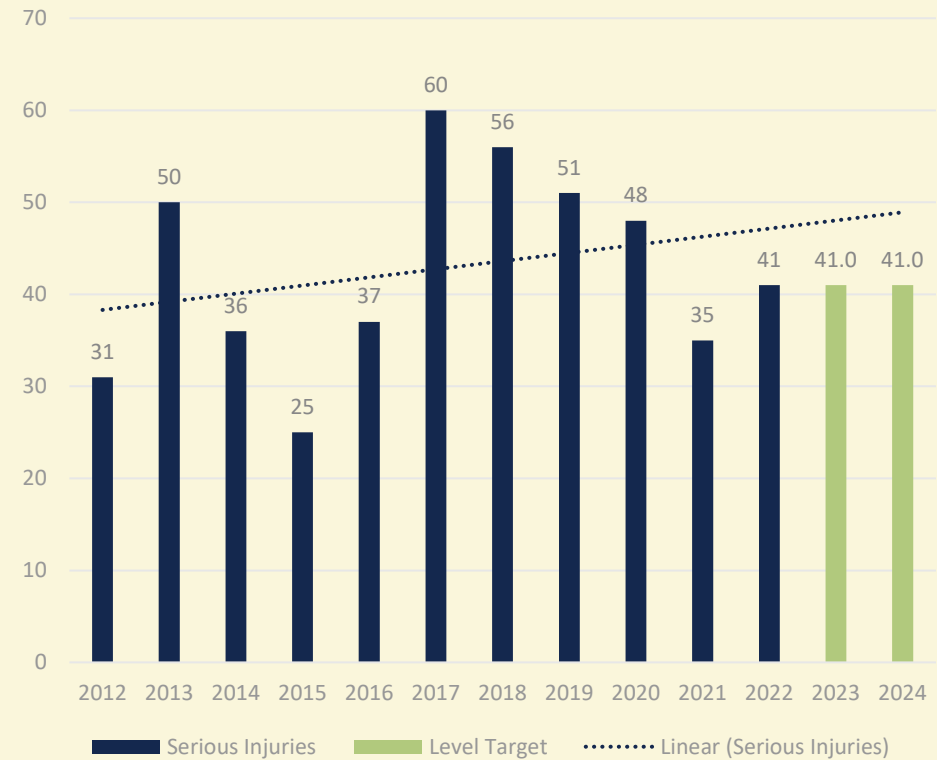


# Performance Measures for Adams County – PM-1

Adams MPO Fatalities



Adams MPO Serious Injuries



# 2024 – 2025 Unified Planning Work Program (UPWP)

UPWP Contract Years	Federal Funds	State Funds	Local Funds	Total	Average Funds Per Year
2012-2013	\$78,420	\$11,803	\$6,553	\$96,776	\$96,776
2013-2014	\$145,193	\$17,524	\$17,524	\$180,241	\$180,241
2014-2016	\$420,000	\$40,000	\$62,500	\$522,500	\$261,250
2016-2018	\$410,000	\$40,000	\$60,000	\$510,000	\$255,000
2018-2020	\$415,250	\$40,000	\$61,312	\$516,562	\$258,281
2020-2022	\$412,000	\$38,000	\$62,500	\$512,500	\$256,250
2022-2024	\$450,000	\$42,000	\$68,000	\$560,000	\$280,000
2024-2025	\$228,000	\$21,000	\$33,500	\$282,500	\$282,500

# 2024 – 2025 Unified Planning Work Program (UPWP) – Recommended Priorities

## **Transportation Improvement Program (TIP)**

- 2023-2026 – Administration
- 2025-2028 – Public Participation Process, Development, Administration

## **Environmental Justice (EJ) Benefits and Burdens Analysis**

- TIP
  - 2025-2028
- Title VI Program (FHWA, FTA and PennDOT BEO compliant)
  - Title VI Policies and Procedures
  - Limited English Proficiency (LEP) Plan

## **UPWP**

- Develop 2025 – 2027 UPWP

# 2024 – 2025 Unified Planning Work Program (UPWP) – Recommended Priorities

## **Administrative Duties**

- Meeting Attendance
  - ACTPO
  - Commuter Services of Pennsylvania
  - Planning Partners (including training and coordination on the District 8 and Statewide level)
  - HOP/Traffic Study/Project Meetings
  - Municipal Meetings

## **Performance Measures**

- Annual List of Federally Obligated Projects
- Safety (PM-1)
- Pavement & Bridge (PM-2 )
- System Performance (PM-3)

# 2024 – 2025 Unified Planning Work Program (UPWP) – Recommended Priorities

## **Increasing Safe and Accessible Transportation Options (ISATO)**

- Continue development and implementation of Active Transportation and Safety Analysis Tool.

## **Coordinated Public Transit – Human Services Transportation Plan**

- Work with York MPO to complete.

## **Roadway Functional Classification**

- Due by December 29, 2025.

## **Local Technical Assistance Program (LTAP)**

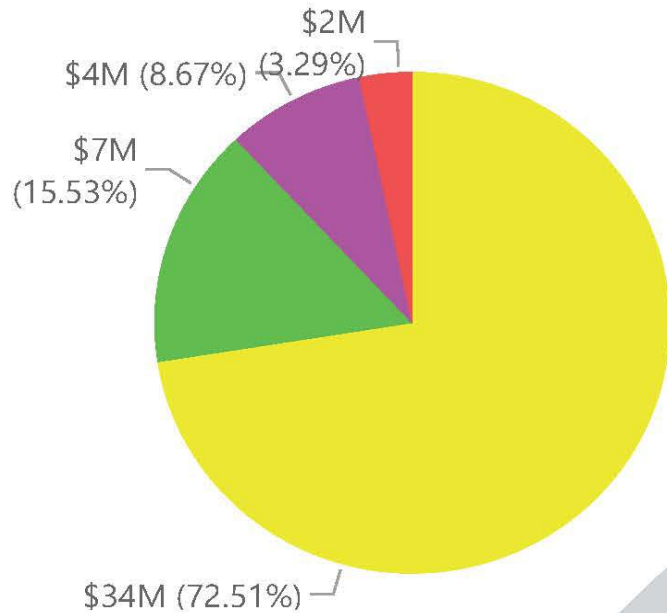
- Continue to promote LTAP classes.



## 2023 TYP FFY 2023-2026

### Program Phase Amount

Phase ● CON ● ROW ● FD ● PE



\*MPMS - Project ID in the Multimodal Project Management System  
 \*TIP - Transportation Improvement Program  
 \*FFY- Federal Fiscal Year  
 \*PE-Preliminary Engineering  
 \*FD-Final Design  
 \*UTL-Utility  
 \*ROW- Right of Way  
 \*CON-Construction

Number of MPMS Projects  
(Includes Line Items)

25

Construction Program  
Amt (Includes Line  
Items)

\$34M

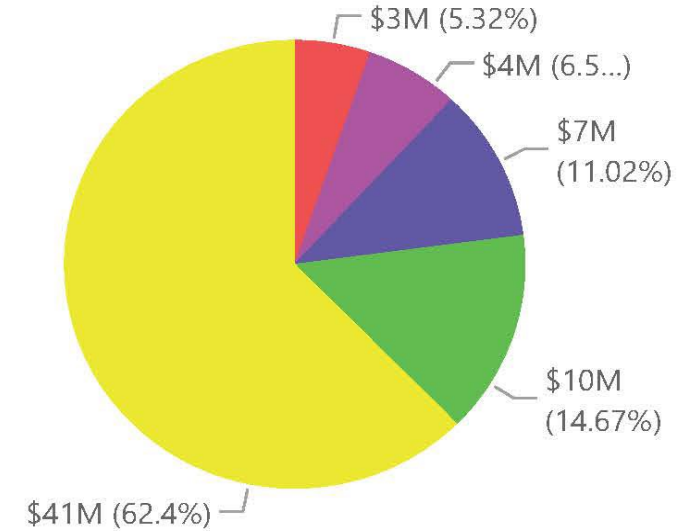
Program Phase Amount  
(Includes Line Items)

\$47M

## 2025 TIP FFY 2025-2028

### Program Phase Amount

Phase ● PE ● FD ● UTL ● ROW ● CON



Number of MPMS  
Projects (Includes Line  
Items)

26

Construction Program  
Amt (Includes Line  
Items)

\$41M

Program Phase Amount  
(Includes Line Items)

\$66M

Carryover Projects  
(Excludes Line Items)

18

# 2025 MPO Draft TIP Breakdown

Funding Type and Number of MPMS

Fund Type ▲	Count of MPMS	Program Phase Amount
183	2	\$204,410
185	6	\$4,793,590
581	5	\$22,393,000
BOF	9	\$5,548,000
BRIP	8	\$6,244,000
CRP	1	\$1,570,000
CRPU	1	\$1,071,116
HSIP	4	\$4,056,000
LOC	2	\$68,136
NHPP	3	\$11,518,000
STP	7	\$8,055,000
<b>Total</b>	<b>26</b>	<b>\$65,521,252</b>

Count of MPMS By Improvement

Improvement	Count of MPMS ▲
Bridge Improvement	1
New Roadway	1
Relocation/Realignment	1
Pavement Preservation	2
Bridge Rehabilitation	3
Bridge Preservation Activities	4
Miscellaneous	4
Safety Improvement	4
Bridge Replacement	6
<b>Total</b>	<b>26</b>

Programmed Amount by Improvement and Year

Improvement	1	2	3	4	Total ▼
⊕ New Roadway	\$4,342,970	\$5,214,883	\$6,194,442	\$7,206,196	<b>\$22,958,491</b>
⊕ Miscellaneous	\$815,210	\$2,156,417	\$1,547,917	\$3,191,198	<b>\$7,710,742</b>
⊕ Bridge Rehabilitation	\$800,000	\$1,530,000	\$2,521,138	\$2,607,433	<b>\$7,458,571</b>
⊕ Pavement Preservation	\$3,257,000	\$2,275,218	\$1,905,627		<b>\$7,437,845</b>
⊕ Bridge Replacement	\$3,333,814	\$388,977	\$309,000	\$1,066,643	<b>\$5,098,434</b>
⊕ Bridge Preservation Activities	\$700,000	\$928,000	\$1,348,000	\$1,401,979	<b>\$4,377,979</b>
⊕ Safety Improvement	\$999,000	\$1,019,000	\$1,019,000	\$1,019,000	<b>\$4,056,000</b>
⊕ Bridge Improvement		\$1,596,500	\$1,614,479	\$310,229	<b>\$3,521,208</b>
⊕ Relocation/Realignment	\$325,000	\$425,557	\$1,149,000	\$1,002,425	<b>\$2,901,982</b>
<b>Total</b>	<b>\$14,572,994</b>	<b>\$15,534,552</b>	<b>\$17,608,603</b>	<b>\$17,805,103</b>	<b>\$65,521,252</b>

## Improvement by Funding Type Amount

Improvement ▼	183	185	581	BOF	BRIP	CRP	CRPU	HSIP	LOC	NHPP	STP	Total
⊕ Safety Improvement								\$4,056,000				\$4,056,000
⊕ Relocation/Realignment											\$2,901,982	\$2,901,982
⊕ Pavement										\$7,437,845		\$7,437,845
⊕ New Roadway		\$2,116,090	\$17,414,669		\$291,816						\$3,135,916	\$22,958,491
⊕ Miscellaneous				\$704,000		\$1,570,000	\$1,071,116			\$4,080,155	\$285,471	\$7,710,742
⊕ Bridge Replacement	\$204,410	\$1,103,641	\$1,115,432	\$1,067,000	\$1,300,365				\$68,136		\$239,450	\$5,098,434
⊕ Bridge Rehabilitation		\$1,265,859	\$1,462,899	\$1,441,433	\$2,988,380						\$300,000	\$7,458,571
⊕ Bridge Preservation Activities		\$308,000	\$2,400,000	\$915,000	\$754,979							\$4,377,979
⊕ Bridge Improvement				\$1,420,567	\$908,460						\$1,192,181	\$3,521,208
<b>Total</b>	<b>\$204,410</b>	<b>\$4,793,590</b>	<b>\$22,393,000</b>	<b>\$5,548,000</b>	<b>\$6,244,000</b>	<b>\$1,570,000</b>	<b>\$1,071,116</b>	<b>\$4,056,000</b>	<b>\$68,136</b>	<b>\$11,518,000</b>	<b>\$8,055,000</b>	<b>\$65,521,252</b>

**NHPP**- National Highway Performance Program-Federal funds directed towards the National Highway System for Bridge and Roadway Projects.

**STP/STU** - Surface Transportation Program (Urban) - Federal funding that can be used on any federally eligible activity.

**BRIP**-Bridge Investment Program - Federal funding for any structure greater than 20'.

**CAQ** – Congestion Mitigation/Air Quality- Federal Funds utilized to implement projects to improve air quality.

**HSIP**- Highway Safety Improvement Program- Federal Funds directed towards projects that will implement measures to reduce or prevent.

**BOF**- Bridge Off System- Federal Funds to be utilized on bridges that are not on the Federal Aid System and the bridge is greater than 20 feet.

**TAP/TAU**- Transportation Alternative Program- Federal Funds primarily focused on Bicycle and Pedestrian Improvements. TAU is the TAP funding allocated to MPO's with a population greater than 200,000.

**581**- State funds that can be utilized on highway or bridge projects that have approved capital budget.

**185/183**- State funds that can be utilized on bridge projects that have approved capital budget.

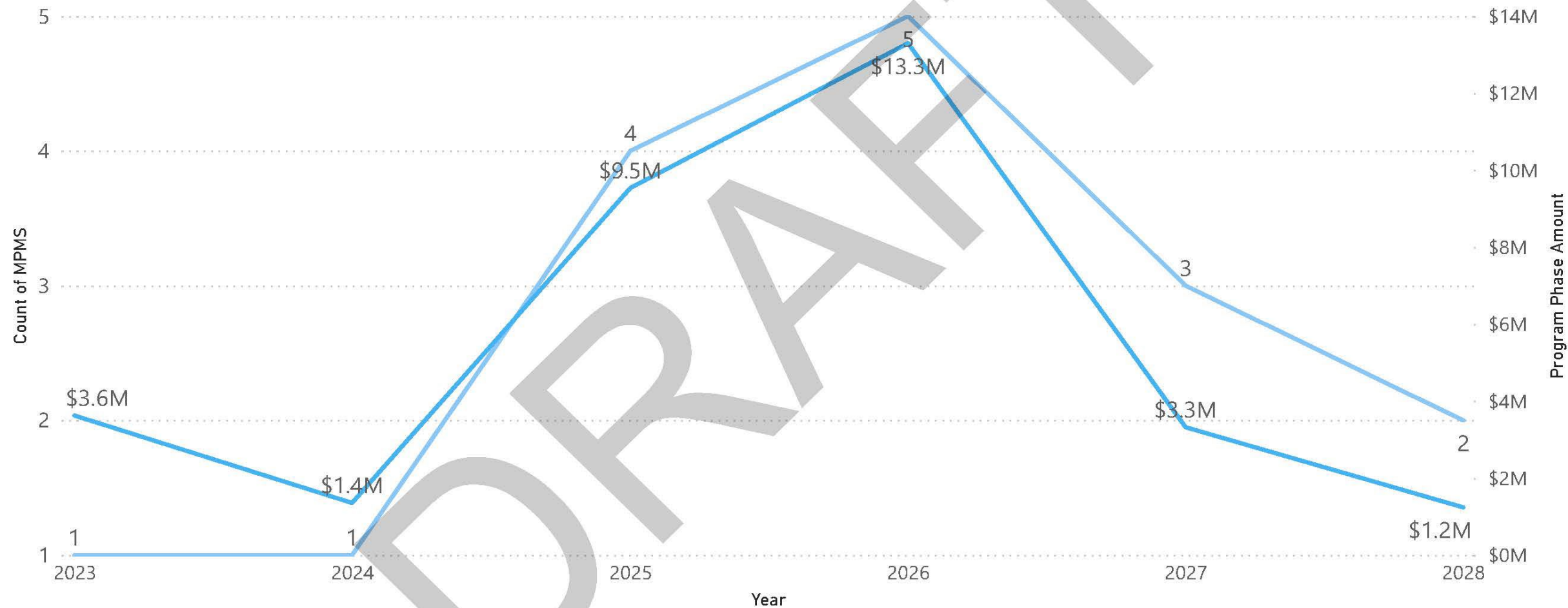
## 2025 TIP Miscellaneous Improvement Projects

Program Year	119288-Carbon Reduction Program (CRP) Hanover RSL	82372-SRTP Rideshare Program	87792-Bridge Reserve	87793-Highway Reserve
1	\$648,807	\$70,403	\$96,000	
2	\$664,103	\$71,521	\$608,000	\$812,793
3	\$664,103	\$65,441		\$818,373
4	\$664,103	\$66,095		\$2,461,000
Total	\$2,641,116	\$273,460	\$704,000	\$4,092,166

# 2025 MPO Draft TIP Let By Year

Number of Project Being Let By Year

Count of MPMS Program Phase Amount





Fund Type	1	2	3	4	5	6	7	8	9	Total
183	\$129,563	\$34,347	\$37,500	\$3,000		\$110,689				<b>\$315,099</b>
185	\$1,136,437	\$1,229,653	\$1,197,500	\$1,230,000	\$1,232,000	\$1,119,311	\$1,228,000	\$1,226,000	\$4,885,000	<b>\$14,483,901</b>
581	\$3,592,000	\$4,067,000	\$7,130,000	\$7,604,000	\$10,103,000	\$10,101,000	\$5,099,000	\$5,097,000	\$20,371,000	<b>\$73,164,000</b>
BOF	\$1,387,000	\$1,387,000	\$1,387,000	\$1,387,000	\$1,387,000	\$1,387,000	\$1,387,000	\$1,387,000	\$5,548,000	<b>\$16,644,000</b>
BRIP	\$1,409,000	\$2,017,000	\$1,409,000	\$1,409,000	\$1,409,000	\$1,409,000	\$1,409,000	\$1,409,000	\$5,634,000	<b>\$17,514,000</b>
CRP	\$385,000	\$395,000	\$395,000	\$395,000	\$395,000	\$395,000	\$395,000	\$395,000	\$1,581,000	<b>\$4,731,000</b>
CRPU	\$263,807	\$269,103	\$269,103	\$269,103						<b>\$1,071,116</b>
HSIP	\$999,000	\$1,019,000	\$1,019,000	\$1,019,000	\$1,019,000	\$1,019,000	\$1,019,000	\$1,019,000	\$4,076,000	<b>\$12,208,000</b>
LOC	\$43,187	\$11,449	\$12,500	\$1,000		\$36,869				<b>\$105,005</b>
NHPP	\$3,257,000	\$3,076,000	\$2,724,000	\$2,461,000	\$2,461,000	\$2,461,000	\$2,461,000	\$2,461,000	\$9,844,000	<b>\$31,206,000</b>
STP	\$1,971,000	\$2,029,000	\$2,028,000	\$2,027,000	\$2,027,000	\$2,027,000	\$2,027,000	\$2,027,000	\$8,109,000	<b>\$24,272,000</b>
<b>Total</b>	<b>\$14,572,994</b>	<b>\$15,534,552</b>	<b>\$17,608,603</b>	<b>\$17,805,103</b>	<b>\$20,033,000</b>	<b>\$20,065,869</b>	<b>\$15,025,000</b>	<b>\$15,021,000</b>	<b>\$60,048,000</b>	<b>\$195,714,121</b>

MPMS	Project Title	EST Let Date	Project Manager	PRJCT_MNGR_NM
117174	Cunningham Rd ovr Trib Marsh Creek	Tuesday, January 01, 2030	Allison M Webster	AMW
117593	Biglerville Rd and Goldenville Rd Int	Thursday, January 01, 2026	Ashlee Steele	AIS
58137	Eisenhower Drive Extension	Thursday, August 13, 2026	Benjamin E Singer	BES
82372	SRTP Rideshare Program		Benjamin E Singer	APB
87792	Bridge Reserve		Benjamin E Singer	APB
87793	Highway Reserve		Benjamin E Singer	APB
87807	Delivery / Consult Assist		Benjamin E Singer	APB

# 2023-2026 TIP Amendment

## FFY 2025-2028 DRAFT TIP MODIFICATIONS FORM

[illegible]

# 2023-2026 TIP Amendment

[illegible]

## 2023-2026 TIP Administrative Actions

**FFY 2023-2026 TIP MODIFICATIONS FORM**

Adams													Informed Coordinating Committee: 1/24/24									
Administrative Modification - Highway					Funds		FFY 2023			FFY 2024			FFY 2025			FFY 2026			FFY 2027 - FFY 2030			Remarks
Item	Project Title	MPMS	Ph	Prog	Fed	Sta.	Fed.	Sta.	Loc.	Fed.	Sta.	Loc.	Fed.	Sta.	Loc.	Fed.	Sta.	Loc.	Fed.	Sta.	Loc.	
1	Hunterstown Hampton Rd ov Conewago Cr	90698	PE	Before	STP		390,000															Increasing the PE phase of Hunterstown Hampton Rd ov Conewago Cr in FFY 2024 for \$1,538 for additional project management. This project may consist of a bridge rehabilitation/replacement on PA 394 over Conewago Creek in Straban Township and Reading Township, Adams County. This project has a current estimated let date of Jan. 1, 2027.
	Adjust			STP				1,538														
	After			STP		390,000			1,538													
2	Highway Reserve	87793	CON	Before	STP					566,558			229,245									This is a reserve line item.
	Before			NHPP				133,701														
	Adjust			STP				-1,538														
	Adjust			NHPP																		
	After			STP				565,020			229,245											
	After			NHPP				133,701														

## 2023-2026 TIP Administrative Actions

[illegible]**FFY 2023-2026 TIP MODIFICATIONS FORM**[illegible]



# 2023-2026 TIP Administrative Actions

7	US 15 Preservation NorthBound	116595	CON	Before	NHPP			2,575,398			3,416,299			2,770,000						Increasing the CON phase of US 15 Preservation NorthBound in FFY 2024/2025/2026 for \$990,291 to the low bid amount. This project consists of a pavement preservation on US 15 (Blue-Gray Highway) from the Maryland line to PA 394 (Shrivers Corner Road) in Freedom, Cumberland, Mount Joy and Straban Townships. This project was let on Dec. 14, 2023.		
	Before																					
	Adjust			NHPP					133,701			590,000			266,590							
	Adjust			STP																		
	After			NHPP			2,575,398			3,550,000			3,360,000			266,590						
	After			STP																		
8	Carlisle Pike Resurface 2	115745	CON	Before	NHPP								590,000			2,874,000				Cashflowing the CON phase of Carlisle Pike Resurface 2 from FFY 2025 to FFY 2027 for \$856,590 to better align with the current estimated let date. This project may consist of the resurfacing on PA 94 (Carlisle Pike) from Gun Club Road to Mud Run in Hamilton and Reading Townships, Adams County. This project has a current estimated let date of Nov. 6, 2025.		
	Adjust			NHPP								-590,000			-266,590			856,590				
	After			NHPP											2,607,410			856,590				
9	Highway Reserve	87793	CON	Before	STP					565,020			229,245							This is a reserve line item.		
	Before			NHPP														10,226,000				
	Adjust			STP																		
	Adjust			NHPP															-856,590			
	After			STP						565,020			229,245									
	After			NHPP															9,369,410			

## 2023-2026 TIP Administrative Actions

**FFY 2023-2026 TIP MODIFICATIONS FORM**[illegible]

## 2023-2026 TIP Administrative Actions

[illegible]

## 2023-2026 TIP Administrative Actions

## FFY 2023-2026 TIP MODIFICATIONS FORM

Adminstrative Modification - Highway					Funds		FFY 2023			FFY 2024			FFY 2025			FFY 2026			FFY 2027 - FFY 2030			Remarks
Item	Project Title	MPMS	Ph	Prog	Fed	Sta.	Fed.	Sta.	Loc.	Fed.	Sta.	Loc.	Fed.	Sta.	Loc.	Fed.	Sta.	Loc.	Fed.	Sta.	Loc.	
14	Wierman Mill Bridge	87431	CON	Before		185					71,106			4,303							Decreasing the CON phase of Wierman Mill Bridge for \$23,771 to match the low bid amount. This project may consist of a bridge replacement on SR 1009 (Weirmans Mill Road) over Tributary to Bermudian Creek in Huntington Township, Adams County. The let date of this project is 1/11/24.	
	Before				581				446,575													
	Adjust				185							-4,303										
	Adjust				581					-19,468												
	After				185				71,106													
	After				581				427,107													
15	Bridge Reserve	87792	CON	Before	BOF	185	158,229			1,022,910			485,305	15,492							This is a reserve line item.	
	Before			BRIP						549,590												
	Adjust			BOF	185						4,303											
	Adjust			BRIP																		
	After			BOF	185	158,229			1,022,910		485,305	19,795										
	After			BRIP							549,590											
16	Adams	87793	CON	Before	STP	581				565,020	110,000		229,245							This is a reserve line item.		
	Adjust			STP	581					19,468												
	After			STP	581				565,020	129,468		229,245										

# 2023-2026 TIP Administrative Actions

## FFY 2023-2026 TIP MODIFICATIONS FORM

Administrative Modification - Highway				Funds		FFY 2023			FFY 2024			FFY 2025			FFY 2026			FFY 2027 - FFY 2030			Remarks		
Item	Project Title	MPMS	Ph	Prog	Fed	Sta.	Fed.	Sta.	Loc.	Fed.	Sta.	Loc.	Fed.	Sta.	Loc.	Fed.	Sta.	Loc.	Fed.	Sta.		Loc.	
1	Conewago Creek Bridge	78640	CON	Before	BOF	581	566,558			1,937	25,000											Increasing the CON phase of Conewago Creek Bridge for \$2,430 in FFY 2024 for temporary short-term, rolled erosion control product, type 2D. This project may consist of a bridge replacement on SR 1015 (Oxford Road) over Conewago Creek in Straban Township, Adams County. This project was let on 9/29/2022.	
	1015/16			Before	STP		785,674																
				Adjust	BOF	581				2,430													
				Adjust	STP																		
				After	BOF	581	566,558			4,367	25,000												
	Adams			After	STP		785,674																
2	Bridge Reserve	87792	CON	Before	BOF	185	158,229			1,022,910			485,305	19,795								This is a reserve line item.	
				Before	BRIP							549,590											
				Adjust	BOF	185				-2,430													
				Adjust	BRIP																		
				After	BOF	185	158,229			1,020,480			485,305	19,795									
	Adams			After	BRIP							549,590											
Program Summary - Net Changes				Before FFY Totals			5,986,320	0	0	7,993,076	2,286,057	0	6,346,770	39,590	0	2,874,000	0	0	10,226,000	0	0	0	
				Adjustments			0	0	0	0	0	0	0	0	0	0	0	0	0	0			
				After FFY Totals			5,986,320	0	0	7,995,013	2,286,057	0	6,346,770	39,590	0	2,874,000	0	0	10,226,000	0	0		



## Transportation Improvement Program (TIP)

### Overview

Fiscally constrained program of transportation improvements

- Partners include Metropolitan & Rural Planning Organizations
- 1st four years of the Twelve-Year Program (TYP)
- Updated every other year
- Multimodal – includes all modes – highways, bridges, public transit, aviation, rail & bike/ped

More Info: [here](#)

Contact: [MPO](#)

## Transportation Infrastructure & Investment Fund (TIIF)

A reserve of \$25 million per year in state funds set aside for transportation improvements aimed at improving Pennsylvania's transportation system related to economic development opportunities. Decisions on how to utilize this funding are at the discretion of the Governor and/or the Secretary of Transportation.

## Marcellus Legacy Fund-Act 13

- Impact fee to the Highway Bridge Improvement Restricted Account in the Motor License Fund
- Used to fund replacement or repair of locally owned (county; municipal), at-risk deteriorated infrastructure
- Fund distributed based on county population (minimum \$40,000)

More Info: [here](#)

Contact: [ra-Act13@pa.gov](mailto:ra-Act13@pa.gov)

# FUNDING OPPORTUNITIES

## Multimodal Transportation Fund (MTF)

\$40 million to PennDOT annually, with \$35 million allocated to highway and bridge-related projects and \$5 million available for projects that propose improvements to any mode.

- Awards must be matched by eligible local funding of at least 30% of the amount awarded
- Awards are time limited. Sponsors have one year after accepting award to execute reimbursement agreement, which expires three years after execution
- Applicants should coordinate project scope, purpose, & need with local authorities, planning region, and PennDOT Engineering District prior to application development and submission
- Grants are available for projects with total cost of \$100,000 not to exceed \$3,000,000

### Eligibility

- Municipality
- Council of Governments
- Business/Non-profit
- Economic Development Organization
- Public Transportation Agency
- Ports or Rail/Freight Entity

### Qualifying Activities

Funds may be used for the development, rehabilitation & enhancement of transportation assets including:

- streetscapes
- lighting
- sidewalk enhancement
- pedestrian safety
- connectivity of transportation assets
- transit oriented development

Please note that PennDOT's multimodal program is separate from the Multimodal Transportation Fund administered by the Commonwealth Financing Authority.

Link: [PennDOT MTF Website](#)

Contact: [RA-PDMultimodalFund@pa.gov](mailto:RA-PDMultimodalFund@pa.gov)

## Transportation Alternatives Set-Aside (TASA)

### Categories of Eligibility

- Bicycle & Pedestrian Facilities
- Bicycle & Pedestrian Education
- Rails to Trails
- Construction of Turnouts, Overlooks, and Viewing Areas
- Preservation & Rehab of Historic Transportation facilities
- Vegetation Management
- Archaeological Activities
- Storm Water Management
- Wildlife Mortality Mitigation
- Vulnerable Road User Assessment Activity

### Sponsor Eligibility

- Local Governments
- Regional transportation authorities
- Transit agencies
- Natural Resource or public land agencies, including federal agencies
- School districts, local education agencies, or schools
- Tribal Governments
- MPOs with <200,000 population
- Non-profit entities

### Funding

- Federal cost share program, not a grant program
- Projects are funded at 100% of the construction cost
- Minimum of \$50,000, maximum of \$1,500,000
- Project sponsor is responsible for pre-construction costs

Link: [PennDOT TASA Website](#)

Contact: [RA-pdTASA@pa.gov](mailto:RA-pdTASA@pa.gov) or  
717-775-3276





# Green Light Go Program (GLG)

Pennsylvania's Municipal Signal Partnership Program

## Eligible Projects

- Study & Removal of Unwarranted signals
- Traffic Signal Retiming
- Development of Detour, Special Event Plans
- LED Replacement
- Traffic Signal Operations & Maintenance
- Innovative Technologies
- Communications
- Connections to TMC
- Detection & Controller Upgrades
- Modernization Upgrades

## Grant Elements

### Local Grant Element

- Designated Corridors (AADT < 10,000)
- Municipal application & 50% match
- Act 89 motor License Fund allocation
- Municipal managed projects

### PennDOT Project Element

- Critical Corridors (AADT > 10,000)
- Municipal application & 50% match
- Program funds as allocated
- PennDOT managed projects

More Info: [here](#)

Contact: RA-PDSignalFunding@pa.gov

# PA Infrastructure Bank (PIB)

## Overview

The Pennsylvania Infrastructure Bank (PIB) is a PennDOT program that provides low-interest loans to help fund transportation projects within the Commonwealth.

More Info: [here](#) and [here](#)

Contact: ra-Act13@pa.gov

# Automatic Red-Light Enforcement (ARLE)

## Overview

Transportation enhancement grants to local, regional & Commonwealth agencies for projects that improve highway safety & mobility

## Eligibility

- Local Authority
- Metropolitan Planning Organization
- County Planning Organization
- Rural Planning Organization
- Commonwealth Agencies

## Categories

- Traffic Signals
- Intersection Improvements
- School Zone Improvements
- Guiderail improvements
- Roadside safety
- LTAP programs

## Match Requirements

ARLE funds do not require a match. Cost Sharing is encouraged.

## Application

Applications accepted annually between June 1 & June 30

## Funding

Between \$3 – \$8.8 million available each year.

Contact: ARLE@pa.gov

More Info: [here](#)

# Municipal Service Payments to County & Local Governments

## Municipal Liquid Fuels Program

- Funds a range of projects to support municipalities in construction & maintenance of public roads
- Allocation based on population & miles of road on the approved Liquid Fuels Inventory

## County Liquid Fuels Program

- Funds a range of projects to support construction & maintenance of county roads & bridges
- Allocation based on historical gas consumption rates
- Annual Report submission required

## County Fee for Local Use Fund

- Established under Act 89
- \$5 fee for local use on nonexempt vehicles registered to an address in the county
- Used for transportation purposes

All Subject to Eligibility Requirements

More Info: [here](#)

# Redevelopment Assistance Capital Program (RACP)

The RACP is a Commonwealth grant program administered by the Office of the Budget for the acquisition and construction of regional economic, cultural, civic, recreational, and historical improvement projects. Projects should have a regional or multi-jurisdictional impact, and generate substantial increases or maintain current levels of employment, tax revenues, or other measures of economic activity. RACP projects are state-funded projects that cannot obtain primary funding under other state programs.

More Info: [here](#)





# Next ACTPO Meeting

March 27, 2024

1:00 p.m.